

SERVING CLEOBURY COUNTRY

ADRIAN SATTERLY

At a hearing in Shrewsbury Crown Court on October 14th. Mr Satterly was not required to attend. The court heard that he had pleaded guilty to taking just under £4,000 from the charity collections at 15 funerals where he had acted for the grieving families.

He is now due to appear in court again on November 11th for sentencing.

ALEC OSBALDISTON

Sadly, Alec passed away on 19th October at the age of 81.

He was a popular and much respected member of our community. Many will remember him for his 60 years of service to Cleobury in areas such as teaching at Lacon Childe, bellringing, Parochial Church Council, Chair of The Friends of St Mary's, and more. A detailed tribute will appear in the December edition of the 'Clarion'.

Our condolences go to Margaret, his wife, and his family.

THE CLARION'S YOUNGEST READER



This is Arabella, whose dad Ron Davis sent us the picture, explaining that she was the first of the family to grab November's copy. Clearly a bright young woman with good taste and great promise. She'll be two on the 17th of this month.

Happy birthday, young lady!

NOVEMBER 2021

A TRIBUTE TO OUR TOWN

Janet is from Nottingham and visited Cleobury Mortimer for her holiday, staying at the award winning Broome Park Farm.

Walking back to the farm one evening, she stumbled and fell, breaking her ankle. People naturally went to help her and called for an ambulance to get her to hospital. She was there four weeks before being allowed home.

She has since written to Broome Park Farm with a very special card featuring shots of the town and a heart warming message:

"To the kind people of Cleobury Mortimer. With thanks for all the help and support you gave me when I broke my ankle whilst on holiday

I hope to return to beautiful Shropshire at some stage in the future. Kind regards and thanks."

Janet



VAUXHALL

VAUXHALL
at
LUDLOW MOTORS



All-New MOKKA

From £20,940

3.9% APR
Representative

Contact us today

Bromfield Road, Ludlow, Shropshire SY8 1EN

Telephone: 01584 876 444

Worcester Carsales Ltd trading as Ludlow Motors is acting as a credit broker and not a lender. We can introduce you to a limited number of finance providers and may receive commission from them for the introduction.



Victoria Allen Funeral Services

An Independent Family Business offering a
Personal and Professional Service

Over 25 years' Experience

Competitively Priced

Private Chapel of Rest

Golden Charter Pre-Paid Funeral Plans

Covering All Areas

Home Visits Available

01584 879035

24 Hour Service

8 Charlton Rise, Ludlow, Shropshire, SY8 1ND
www.vallenfuneralsludlow.co.uk
Email: vafs@btinternet.com

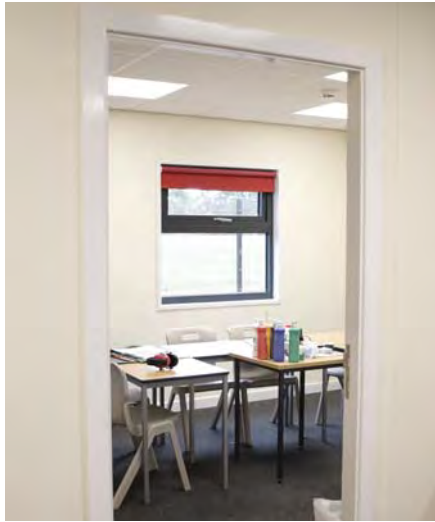


The Cleobury Clarion, November 2021

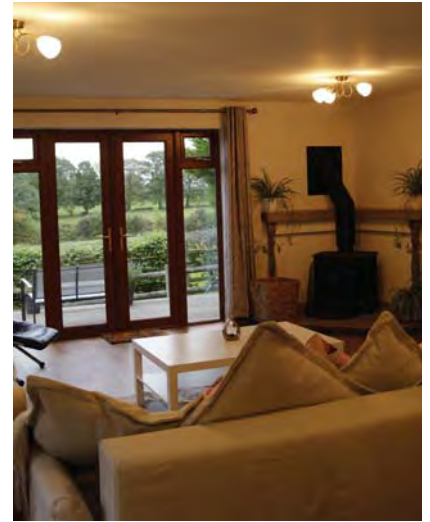
Volume Seventeen - Edition Eight



*"All this in a Fiat 500?"
See Page 5*



*Special Kids - Special place.
See Page 11*



*A Special Place to Stay.
In Business. Page 61*

And On Other Pages....

- | | |
|-----------------------------------|-------------------------------------|
| 7 - James Bond at The Regal | 35 - Lord Nelson is Coming |
| 9 - The History Society | 37 - The Social Calendar |
| 13 - MoTown and Northern Soul | 39 - Simon Morton on Gardening |
| 15 - The Clarion Jobs Page | 41 - Catherton Common Update |
| 17 - The Legion's Harvest Auction | 43 - Mrs Grumpy |
| 19 - From The Bandroom | 47 - The Stroke Support Group |
| 21 - Stepping Out! Walking News | 51 - Curlews on Clee Hill |
| 23 - November in the Wyre Forest | 53 - Cleobury Hub |
| 25 - Philip Dunne MP | 55 - Let's Beat the Scammers |
| 27 - Advent Soup Lunches | 57 - The Men's Shed |
| 31 - Cleobury Mortimer Benefice | 59 - Cleobury Mortimer Town Council |
| 32/33 Doddington Lodge | 63 - Local Information |



DRY CLEANING & LAUNDRY SERVICE
20 HIGH STREET, CLEOBURY MORTIMER
01299 270571

HOUSEHOLD & COMMERCIAL WORK WELCOME
FULLY ATTENDED, OPEN 7 DAYS

Self Service ~ Full Service Wash/ Dry/ Fold/ Ironing ~ Large Machine for Big Items
Service Washing for Duvets/ Blankets/ Sleeping Bags ~ Team Sports Kit Laundry Service
Equestrian Rug Cleaning ~ Laundry Service for Pet Items
Professional Shirt Service ~ Nikwax Wash & Proof for Outdoor Clothing

.... the place to air your dirty laundry!



RED HARE

45 HIGH STREET
CLEOBURY MORTIMER
WWW.REDHARESALON.CO.UK

01299 270702

YOUR
HAIR
IS
OUR
BEST
ADVERT

PPD FREE - PARABEN FREE - SULPHATE FREE - CRUELTY FREE

“Red Hare now offers a private hairdressing room. Perfect for those wanting more privacy, peace and quiet“



CLEOBURY CHIROPRACTIC

31 High St. Cleobury Mortimer DY14 8DQ

JS James
Smith
OSTEOPATHS

We offer both **CHIROPRACTIC** and **OSTEOPATHY**,
using gentle methods suitable for all ages.
Appointments available outside of normal working hours.
Both practitioners are fully registered, insured & regulated.

Sue Brown
MA MSc DC MMCA
CHIROPRACTOR

- * BACK PAIN * SCIATICA * POSTURAL PROBLEMS
- * JOINT PAIN * HEADACHES (arising from the neck)
- * Some SPORTS INJURIES

PLUS * COMPUTER (DSE) WORKSTATION ASSESSMENTS
* BACK CLASS – Weekly exercise class for those with
back/neck pain.

Hands for Heroes
Free Chiropractic Care for War Veterans



iO
THE INSTITUTE
of OSTEOPATHY



01299 519351 / 07932 000028 / 07506 287191

www.notjustaboutbackpain.com

www.jsosteopaths.co.uk

GCC registered
General Chiropractic Council
www.gcc-uk.org

 **General
Osteopathic
Council**
I'M REGISTERED
Registration no. 9254
www.osteopathy.org.uk

THE NEARLY DEAD POETS' SOCIETY

At our September meeting the new formula of each member writing a poem to include a particular word was tried out. In this instance the word was "Air" and all had done their homework.

We moved on to offer personal selections and soon found that two had chosen works by Lord Alfred Tennyson, two had Rudyard Kipling and for the final choice a reading of Christina Rossetti's 'Remember' saw a book of her work produced and another of her works read. Does this mean that good taste prevails in the group?

The subject word for October was "Autumn", which we will hear applied to works on Monday the 25th. As ever, in the library.

THANK YOU

Valerie Carter and family would like to thank everyone for their kindness, condolences, donations and cards sent in our sad loss.

Special thanks go to Victoria Allen and also to the Royal British Legion for their escort.

Donations amounting to £500 were split between the Air Ambulance and Forest Dog Rescue. God Bless everyone.

BORDERS CLASSIC BIKE SHOW

The number of bikes riding into town and heading for Lacon Childe School confirmed that enthusiasm for this annual event has not slipped. Classic machines from the wider Midlands and from North and South Wales pleased them and amongst the traders was a display of 400 club badges of all ages.



400 motorcycle club badges on a homemade display and it all folded down to fit in a teeny Fiat 500 car!

Dave Clark won the Best Pre 1972 award with his lovely 1971 BSA Rocket-3 and Colin Tolley oversaw the AJS and Matchless Club stand that was Best Club. Bewdley's Steve Stott won the Best Pre War cup with his 1929 Royal Enfield and Stourport's Peter Round's BMW R69S was Best European. Furthest travelled entrant was Monty Davis from Conway, whose 1945 350cc twin was voted Best Triumph.

Tracey Clinton did a great job as show organiser, with lots of willing helpers. As usual, the profit from the show went to the school Parent Teacher Association, and this year it was an impressive £3,500, which means they can also make a donation to the County Air Ambulance.

SILLY BIT

An elephant walks into a pub where a pianist is playing, sits down to take a drink and after a while begins to weep.

The pianist, struck by the elephant's tears, asks "Did the tune mean that much to you?"

"Oh no, I recognise the keys," says the elephant.



The Oak Boy
TRADITIONAL OAK FRAMING
SINCE 2011
07398 233443

John Caswell
Johnjocaswell@yahoo.com

SERVICES AVAILABLE

| | |
|--|---|
| <ul style="list-style-type: none">➤ Flooring➤ Manufacturing & fitting doors & windows➤ Kitchens ➤ Cladding➤ Studwork➤ Bespoke Oak Framing | <ul style="list-style-type: none">➤ Landscaping➤ Patios➤ Brick & Stone work ➤ Roofing, Tiling, Guttering➤ General Building➤ Property Maintenance |
|--|---|

Call now for a Free Quotation!



CM BESPOKE CARE

CareQuality
Commission
Registered

SPIC
Shropshire Partners in Care

Personal, Nursing and Domestic care.
Tailored to your needs.

Call for a free consultation

Tel: 01746 718816
Mobile: 07943834132

www.cmbcare.co.uk
www.facebook.com/cmbcare
email: cmbespokecare@btconnect.com



07971 361901 or 01299 832484

Complete Bathroom Installations
Bathroom Refurbishment or Repairs
Wet Rooms
Professional Wall and Floor Tiling



For a quality and guaranteed service, call Stuart for a free quote
Highly Recommended / References available - see my reviews on www.freeindex.co.uk

FOR THE BATHROOM YOU DESERVE!

TDC CARPENTRY SERVICES

Fully insured qualified professional
Excellent workmanship and quality customer care
From hanging doors, fitting kitchens to bespoke projects

Tim Clare - 07890 519980



Phoenix Environmental Ltd.
Contaminated Land Consulting and Contracting

Bringing 17 years of experience to bear, we provide straightforward advice help guide you through planning, or deal with your contaminated land, geotechnical and geo-environmental issues.

Phoenix Environmental offer both site and office-based services including:

- Regulatory Liaison and Planning Approval
- Phase 1 Desk Studies (Geology, Hydrogeology, Hydrology, History)
- Intrusive Investigation (Phase 2) Design and Application
- Trial Pitting, Cable Percussive Boreholes, Dynamic (Window) Sampling
- Flood Risk Advice
- Geotechnical Investigation/Advice, Foundation Advice
- Risk Assessment (GQRA/DQRA)
- Remediation Strategies/ Verification Reporting
- Environmental Audits/Site Audits
- Site Based engineering and supervision
- Drone Surveys/Media Production

We'll be there to guide you through every stage.
www.phoenixenviro.co.uk

Contact us: email. enquiries@phoenixenviro.co.uk Tel. 07800 646691



JAMES BOND AT THE REGAL

The long awaited and highly acclaimed James Bond film 'No Time To Die', which marks Daniel Craig's final film as the great adventurer, is booked for showing at The Regal Cinema in Tenbury Wells on November 1st, 2nd, 4th, 6th, 8th 9th and 11th.

The show starts at 7.00, apart from the 2.00 o'clock matinee on the 6th and adult prices are £8.50. The telephone number is 01584 811442.

BAYTON CHURCH NEWS

On Saturday November 6th we are holding a Big Christmas Sale in the Church from 10.00 till 4.00 and everyone is welcome to come along to find bargains.

There will be lots of items for sale, all new and not seconds or inferior. Stalls include the Massive Christmas Collection, Cakes, Plants and Bring and Buy (where items may be pre-owned). Teas, coffee and cakes will be served

throughout. In case you can't manage Saturday we will be open on Sunday morning from 11.00 till 1.00 as well.

To give you an idea we have 80 feet long rolls of Christmas wrapping paper at £4-99, crackers starting at £1-50 for a family box and branded goods at discount prices. Tickets for our Christmas Raffle will also be available.

On a clear day the views from Bayton Church are spectacular looking out over the Rea Valley to the Clee Hills and as far as the Black Mountain and Brecon Beacons. We invite you to bring your cameras and spend a pleasant hour or two in our company.

Brian Link

CLOWS TOP GARDENING CLUB

November can be a damp, raw month. Flowers may be scarce in the garden but there are many berries, evergreen foliage and trees with decorative bark to add interest on the dullest of days. Frosts can be quite frequent at night, especially when it is calm and clear. Cold winds

from the east will make it feel much colder than it really is. November is also the perfect time to plant new roses in a well prepared site and don't forget your Spring Flowering Tulips.

Our next meeting will be on Wednesday 24th November, and will be the AGM and members' social evening. This is the last event in the year as there is no meeting in December.

Our first meeting in the New Year will be on Wednesday 26th January 2022, the speaker for the evening will be John Robinson with a talk entitled 'Wildlife on the Severn'.

Pauline Bowen

THANK YOU

A big thank you to all who supported our MacMillan Coffee Morning at Hopton Wafers Village Hall. The attendance was amazing and a grand total raised for Macmillan is £1,000.

A special thank you to Jim Reynolds, Hands On Printing, Traceys Creations, Hopton Wafers Village Hall Trust and all our wonderful helpers. God bless you all.

Flowers By Fiona *est 1991*

**Fresh Flowers made to order
Special Occasions
Weddings, Anniversaries, Birthdays
Sympathy Tributes**

**19a High Street,
Cleobury Mortimer**

Tel: 01299 272 995

Professional. Affordable. Local.



Electrical Installations

No matter the size, we can gladly undertake all Domestic, Commercial and Industrial installations you require.

A family run business, with over 25 years industry experience.

From period properties to agricultural solutions, we provide a professional service every time. We also do call outs and emergency work.

Renewable Energy

Protect yourself from rising energy bills by considering renewable energy.

Solar PV is the most accessible way you can save energy by producing electricity from the sun. Earn a tax free income from the electricity your system produces.

Speak to us about how renewable energy can benefit you or your business.

Whatever your query, give us a call.

T: 07971 096267 / 08450 564173

W: www.awe-services.co.uk

Two Staks, Eagle Lane, Cleobury Mortimer, Worcs. DY14 8RA



THE HISTORY SOCIETY

The History Society has been around in one form or another since it was founded as a local history research group in 1981 by Mrs Kath Grove and John Davis. The last forty years have seen a considerable amount of work done. Unfortunately, much of that early effort is no longer of value as it consisted of transcribing records held in archives, but which are now readily available online. However, one of the major successes of the Society – and a lasting legacy – has been the publication of Cleobury Chronicles, starting in 1991, with volume 13 being published last year. Also a great success were the Cleobury Mortimer Lectures, with a particularly memorable full church when Mary Beard gave her talk. Sadly, these only ran for three years before the Covid lockdown, but we raised a significant sum for the St Mary's Youth Project –

“history contributing to the future”.

During the last eleven years, since I was asked to chair the Society, I have tried to encourage a number of research projects, but the reality is that in many ways the Society is running out of steam. Our current membership is less than twenty and it is only the same small group of stalwart members who regularly attend our twice monthly meetings. We have been unable to meet since March 2020 due to Covid restrictions and it now looks as if several of those regular attendees are on the point of dropping out.

Despite several attempts over the years to encourage interest locally we have not been successful in attracting new members. Without new members – who are willing to attend meetings and participate in research – we cannot continue to meet our objects which are to “promote the study of the

history of Cleobury Mortimer and surrounding districts, to educate the public and to encourage the preservation and transcription of relevant documents and records”. Without new members, the Society will be forced to disband. This would be a great shame as I am sure that there is a good deal of interest in local history.

We took a decision at our recent AGM to see whether we could attract more interest in the Society, failing which the Society will be wound up. Please don't let that happen – there is still a great deal that can be uncovered about Cleobury Mortimer, not just in terms of ‘ancient’ history, but developments and events over the last hundred years.

If you are interested, or would like to know more, please contact me on 01299 270047 or at robert@cleoburymortimerhistory.co.uk.

Dr Robert Hodge
Chairman




Claire Bradley
Floral Designs

Florist for all occasions, specialising in wedding and funeral flowers

Winner of the Matrimony Award 2020 Best Wedding Florist
Nominated for 2021 Matrimony Awards

Christmas workshops available

Email: clairebradley1@icloud.com
01299 270415 or 07980 580770




Natalie Taylor Dip CFHP MPS Pract.
Specialist Foot Health Practitioner

Specialising in:-

- In-growing toenails
- Fungal infections
- Nail trimming
- Verrucae
- Calluses
- Corns

All from the comfort of your own home.
If you would like to make an appointment,
please call on **07779 113982** or **01584 890112**

People when thinking of having Home Care often ask who are your staff? What sort of company are they?

TLC are a family run care provider supporting people with Disabilities, Dementia, Aging Population and Acquired Brain Injury to remain living at home for as long as it is safe to do so. Clients when considering home care will often find it difficult to accept and wonder about who are the staff and what qualifications they have? I cannot speak for other companies, however in our company it is made up from many sectors of our society and when these are put together, we have an Outstanding Team. 

One of those sectors are the future NHS professional, we have Daisy who is in her last year of her training to be a midwife, Lucy who is working towards the end of her training to be a Physiotherapist. Christina and Aila about to start their journey into nursing. We have further staff who have just been accepted into the NHS. These lovely kind young adults not only study many hours both in university, on hospital wards, they also give to us and have helped us support our clients for many years! Most joined us while still at college.

TLC have ex-nurses that come to us after raising their family and some, in recent times have re-joined their colleagues in the NHS.

We have staff who have raised their kids and now want a career, TLC will train or retrain people to help people reach their full potential and become one of our Outstanding Team.

We encourage kind caring and honest people of all ages and backgrounds who want to make a difference to people's lives to join our team. TLC invest heavily in people with ongoing support and training to help our new colleagues achieve their goals and reach their full potential. Once initial training is complete and they have been assessed as competent, TLC Induction Manager and our Training Manager will support staff through to achieve their Level 2/3 in H&S Care

Our Training

TLC's Training Team offers full free training on site and support staff through their Care Certificate. We have strong connection with an outside Training Provision who help our staff to achieve their Level 2/3 in H&S Care. Currently we have 32 members of staff that have already achieved Level 2/3 in Health and Social Care. We have qualifications at level 4 and five of our Senior Managers have Level 5. All staff that are new to care are required to achieve Level 2 within the first two years of their employment.

Contact us

For further enquiries please regarding Care or employment please ring TLC Care at Home 01299 272897 for an informal chat. Visit www.tlccareathome.com or wecare@tlc-careathome.co.uk

*Unlock your Potential.
Success starts here!*

COVID-19 Update

All our staff are provided with full PPE's including Gloves, Full Aprons, Sleeves, Visors, Gloves Surgical Masks.

Video training on Donning and Doffing PPE's sent out regularly.

Staff sign health declarations daily, Staff have weekly Covid-19 test. Most of our staff have now been vaccinated against Covid-19. TLC work closely with government regulation and update our risks assessment accordingly.

FOREVER ONWARD

The new building at Lacon Childe School has been a mystery for some months. The invitation to look around the new classrooms and other educational facilities came from head teacher Darren Reynolds. Of course we went.

The new build replaces some of the old demountable rooms that were looking tired. They were at least 40 years old and Mr Reynolds explained that their projected life when new was about 15 years; they've well and truly done their time.

They have been replaced by four classrooms with 21st century facilities, bright and comfortable. An addition to these are five small teaching spaces with an open reception area for children and staff to develop interactive social skills.

Darren Reynolds explained that this is a very special area, for children who find the move from primary to secondary school frightening. If you come from the intimacy of a small school where you might know the name of every other pupil, and arrive as one of 500 or more pupils, most of them older than you, it's quite a test of character. For the more nervous, it can be downright scary

All credit to Darren Reynolds that he recognised this fact and that there was no provision in South Shropshire for such pupils with special needs. There is now. The man talks about the children in his charge with a strong sense of basic justice that says every child should have the best opportunity to learn and flourish.



The teaching spaces for children with special educational needs are small and welcoming.

This new building borders the footpath from Love Lane to Catherton Road, where the next plan is landscaping along the fenced area, to make it more attractive to pupils inside the fence and pedestrians outside.

It's the result of an approach by the Local Authority to set up the Special Educational

Needs Hub and they have funded the development from capital granted to the SEN team at Shropshire Council. With the funding for all schools heavily weighted in favour of city locations, counties like Shropshire, Herefordshire and Worcestershire are among the most poorly supported local authorities. So a school in an area like Birmingham or Coventry will get roughly twice as much per pupil to spend as those like Lacon Childe.

Darren Reynolds joined the school as head teacher in September 2013 and has certainly made his mark, though he's very modest about his contribution to the success story we have in Love Lane.

"My hours are no different from many teachers at Lacon Childe and other schools," he explains. "We work tirelessly for the benefit of the children in the school and we're rewarded by the high standards and expectations of all the children in our care."

It's no easy ride, but he has clearly thrived on it and is looking forward to retirement when he leaves the school at Christmas. He really has earned a rest. JR

Charlton Interiors

UPHOLSTERY & INTERIORS

Rosemary Jones

Mob: 07837 609229

Phone: 01584 861823

Email: info@charltoninteriors.com

www.charltoninteriors.com



BESPOKE YOGA TUITION



Relax Breathe Stretch Tone

One to one Yoga lessons

BWY trained teacher with over 15 years experience

Can travel to your home

Angela Kazimierczuk

07870 506655

CLEOBURY MORTIMER PARISH HALL.

The largest hall in the area.

We are open again so would you like to celebrate an event, party, wedding, or just a get together?

We are able to cater for small or large parties, sit down dinner parties for up to 100 people with or without a bar.

Come and have a look at what we can offer.

To book call Janet on 01299 271070.

WANTED

The Parish Hall Committee is looking for a volunteer to fill the post of Secretary to the committee. Duties: to take notes and prepare the minutes at our monthly meetings.

If you can commit to this role please call Val on 01299 270830.

Do you know a 2, 3 or 4 year old who would like to join our fantastic nursery?



Stottesdon Gateway
NURSERY

We really care and make learning fun

We can offer:

A safe and nurturing learning environment with dedicated and caring staff.

High quality provision with strong links to Reception.

An amazing outdoor area and use of the school facilities and space.

- ✓ Nursery places for 2, 3, 4 year olds, available from September 2021
- ✓ From 15 - 30 funded hours available.
- ✓ BEFORE & AFTER SCHOOL & HOLIDAY PROVISION for children aged 2 - 11 years old.

TO BOOK A TOUR :

Stottesdon C of E Primary School

Stottesdon
Shropshire
DY14 8UE

TEL: 01746 718617

| Nursery and Wrap-around sessions (term-time) | | Fees |
|--|----------------------|--------|
| Early Start | 7:30am - 8:00am | £4.00 |
| Breakfast Club | 8:00am - 8:45/9:00am | £4.00 |
| Morning Session | 9:00am - 11:30am | £10.00 |
| Lunch club | 11:30am - 12:30pm | £4.00 |
| Afternoon Session | 12:30am - 3:00pm | £10.00 |
| After School Club | 3:00pm - 5:30pm | £10.00 |

NEW NOTES SINGERS

Do you enjoy singing or would like to have a go?

The New Notes Singers is a new choir which meets on Thursday afternoons from 2 to- 4.30pm (no turning out at night!) at the Recreation rooms on Clee Hill next to Premier supermarket.

New comers who came to the taster afternoon on October 14th were warmly welcomed and seemed to enjoy the time singing with others .So just come along, the more the merrier.

All will be made welcome, no auditions required, everyone can sing!

For more information contact Barbara 07801 924035

MOTOWN AND NORTHERN SOUL

Sapey Gold and Country Club are hosting a MoTown and Northern Soul Night on Saturday November 27th. Arrive at 7.00 for a 7.30 two course meal before the disco gets you moving. Tickets £22.50 a head and you can email Jess on bar@sapeygolfandcountryclub or call 01886 853288. You'll

find the club on your satnav at WR66XT.

THE BREAKFAST CLUB

At our October meeting, Dr Mark Baldwin who has extensively researched local history, gave a talk on The History of The Wells.

The Wells, situated at the eastern end of the town, was for many years the main source of fresh water in Cleobury Mortimer. Indeed, it was because of the reliable source of water in The Wells, that Cleobury became a settlement at all. Why there is rarely water there now remains a mystery and although various theories have been put forward as to why this is, none has been proved and it remains a mystery.

A land survey in 1782 clearly showed The Wells, but in 1883 engineers realised that diseases could be carried by water and concern was expressed about the proximity of the graveyard. The new cemetery at the western end of the town was opened in 1893. The Wells continued to be the main source of water and a pumping station was built,

fired by gas and later by electricity. The original pumping house is now the scout hut. Cleobury Mortimer was not connected to the Elan Valley water supply until 1979! Walking near The Wells in future will be so much more meaningful after Mark's talk.

Our next meeting is on Tuesday November 9th when the speaker will be Pete Blackburn talking about the Men's Shed. Contact Angela Drennan on 01299 270636 for further information.

Diane Waddington

FARLOW AND ORETON CHRISTMAS TABLE TOP SALE

Saturday November 27th sees a table top sale at Farlow and Oreton village hall with a range of gifts and crafts, cakes and bakes, plus refreshments and raffle. All in aid of the Melville Chapel in Oreton.

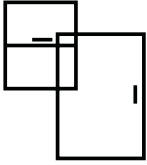
Entry is free, doors open 10.00 until 3.00 and if you want a table to sell, it costs just £5.00.

Contact Joanne Gibbons on 01584 891553.

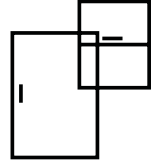


Kim Stanley
30, High Street
Cleobury Mortimer
Shropshire
DY14 8DQ

Tel. 01299 271800
www.kimstanley.co.uk



Ashley Bannister Windows & Doors



- UPVC Windows & Doors
- Composite Doors
- Porches & Conservatories
- Glass Unit Replacement
- Fascia, Soffit & Guttering
- Handles & Letterboxes
- Hinges & Window Restrictors



No Job Too Big or Small
Certass Approved Installer
Local Tradesman Based in Highley

ashban94@hotmail.com
Ash: 07817 785245



N.R. Evans Garden Maintenance



All aspects of garden maintenance undertaken
Lawn mowing, strimming, hedge cutting, chain sawing,
garden clearances, patio jet washing.

Call for a chat on 07535 902847

Email: nrevansgardenmaintenance@gmail.com Facebook: N.R.Evans Garden Maintenance

MIKE AND SHELLEY ROBERTS
Haulage Contractors
Supplier of Aggregate and Asphalt products
12 Lacon Close, Cleobury Mortimer DY14 8EF
07860 669350 07966 045012

The Clarion Jobs Page

Receptionist and administrator required for growing accountancy practice.

Mortimer Childe Accounting Ltd are looking for a keen and motivated individual preferably with experience in a professional background to provide reception and administration work. Good communication skills and experience in excel are essential.

The role will be varied and include answering calls, updating internal systems and preparing forms for submission to Companies House and HMRC. Must have an eye for detail and be able to work accurately both independently and as part of a team.

Negotiable salary for the right candidate dependent on experience.

To apply please contact Sarah Morgan on 01905 651 035 or
Sarahm@mortimerchilde.co.uk



Lacon Childe School

Minibus Drivers – Permanent and Relief

Part time : 10 hours per week : term time only : Hours: 7.45 - 8.45am and 3.15 - 4.15pm daily

Salary: Grade 4 : Point 11 (£9.55 per hour)

We are looking for enthusiastic and reliable drivers to join our team providing a morning and end of school transport service to pupils.

Applicants are welcomed from those who already have the D1 category on their driving licence or who are able to drive our minibus lite vehicles.

A minibus driver assessment, induction and first aid training will be arranged for the successful candidates.

To apply for this position, please download the application form from our website and send completed applications and supporting documentation to sue.broad@laconchildeschool.co.uk.

Lacon Childe School and The Shropshire Gateway Educational Trust are committed to safeguarding and promoting the welfare of children, young people and vulnerable adults and expect all staff and volunteers to share this commitment.



Gilbert Carter

Specialist Joinery

- Built in Wardrobes
- Double Glazed Wooden Windows
- Staircases
-

www.gcartersmartjoinery.com

01299
270626

Qualified tradesmen, fully insured



Find Your Smile at Cleobury Dental Practice

Whether you're looking for dental implants to replace missing teeth, invisible braces for a straighter smile, boosting your confidence with teeth whitening or a dedicated dentist for your regular care, you can find it all here in the heart of historic Cleobury Mortimer.

- Modern, state of the art facilities and the latest dental technology
- Free car parking adjacent to the practice and step-free access to our dentists' surgeries
- Enjoy private dental care from just 47p per day with our membership plans
- Highly experienced in helping those with dental phobias

Services Provided

- Tooth-Coloured (White) Fillings
- Sedation for Anxious Patients
- Teeth Straightening with Braces and Invisalign
- Dental Implants (Replacement of Missing Teeth)
- Emergency Appointments Slots Available (first come first served)
- Hygienist Services
- Private and NHS Care (NHS subject to capacity)

Opening Hours

Mon, Tue, Wed and Fri **9am-5pm**
Thu **9am-7pm**
Saturdays **by appointment only**

Tel: 01299 271 747

www.cleoburydental.co.uk

BDA Good Practice
Member

 **invisalign**
PROVIDER

THE LEGION'S HARVEST AUCTION

The Legion held its annual Harvest Auction at the Sports & Social Club on September 24th. There was some concern whether there would be enough items for sale and buyers to buy them. In the event, things went well, with a good range of fruit and veg, plus vouchers provided by local businesses.

Jim Hulme showed his exemplary stamina as Auctioneer, and the whole evening was a great success, raising over £1350. The Branch would like to thank all who supported the evening.

Mark Baldwin

BILL WILSON

Bill Wilson, of Cleobury Mortimer, passed away peacefully at Churchill House Nursing Home in Ludlow, on 11th October 2021, aged 85 years.

Loved and dearly missed by all his family and friends.

Funeral Service to take place at Wyre Forest Crematorium on Wednesday 3rd November at 11.30am. The Funeral Cortege will be leaving Ron Hill Lane, at

approximately 10.45am should anyone wish to pay their respects.

All enquiries please to: Victoria Allen Funeral Services, 8 Charlton Rise, Ludlow SY8 1ND. 01584 879035

THE SHOEBOXES

I often get asked where our shoeboxes are going and the answer is Eastern Europe. The poor parts of Belarus, Bosnia, Moldova and Georgia.

One of my trips to give out your boxes was to Belarus and I remember it as a very cold, bleak place. One day we were told we were going to an orphanage which had shoeboxes last year - they never get them again, it was a once in a lifetime event. One lady from England was told they'd had no soap or shampoo for the children for a year, so when she got home she asked her friends to buy soap or shampoo and give some to her. The next year our group was asked to go to this orphanage and hand it all over.

I remember it was a very cold day, even in the orphanage you didn't take your coat off. They were so pleased at all the soap and

shampoo we handed over from last year's group, everyone ended up in tears.

This is the sort of experience that makes me keen to keep on doing the boxes. Thank you all for your efforts, I'll let you know our final total when all our boxes have been handed over for their journey to Eastern European countries.

Jenny Vanderhook

THE FESTIVAL AT THE EDGE

Ladies and Gentlemen, some dates for your 2022 diaries. The Festival at the Edge, which brought music, poetry, story-telling and humour to the lovely setting of Hopton Court, will be back next year. The dates are July 15th to 17th and you can expect a similar variety of quality acts to enjoy.

A REMINDER

CoCo Coffee Mornings are up and running again on the 2nd and 4th Wednesday of the month, from 10 - 12pm. We are now upstairs in the Market Hall, meaning more room for all. Come with friends or meet new people for a coffee and cake, just £2 a person. *Catherine Evans*

Firewood

Seasoned logs, barn dried & ready to burn.

Free local delivery -01584 890993 or 07970878224

Various size loads available



Paul Harding Tree Services



John Brazier & Co

Accountants & Business Advisors

Accounts – Company, Partnership and Sole Trader
Tax Returns – Corporation Tax and Personal
VAT - Returns and advice
Payroll Service including RTI

For a personal and
professional service

Contact John Brazier or Sarah Morgan to discuss your requirements on 01299 271473 or email at info@johnbrazierco.co.uk. Alternatively, you can arrange a meeting at 53, High Street, Cleobury Mortimer, Worcestershire DY14 8DQ

01299 271 473



Bumperscuff Rescue

• Body Shop excellence • Home convenience

Cost effective car body repairs!

- Bumper scuffs
- Paint scratches
- Kerbed alloy wheels
- Small dents

Free no obligation quotes, all work fully guaranteed Call **Andy Taylor** now on **07834 322216** or visit www.bumperscuffrescue.co.uk

CLEOBURY MORTIMER CARPETS

Supplying and Fitting of:-

- Carpets
 - Natural floorings (Cair, Sisal & Seagrass)
 - Vinyls
- Carpets supplied by: Victoria Carpets, Fibre Flooring
& Alternative Flooring at Unbeatable Prices

Contact Details:-

Address: 26 High Street
Cleobury Mortimer •DY14 8BY
Telephone: H: 01299 270095
M: 07739 186163
Email: garethleach@aol.com
or check out our new website
www.cleoburymortimercarpets.co.uk

INFINITE ELECTRICAL SOLUTIONS

For all your electrical needs:

House rewires

Fuse board upgrades

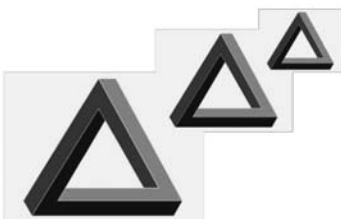
Electric showers

Need an extra socket or light installed?

No job too small

For a FREE quote

Call Lloyd 01584 811184



FROM THE BANDROOM

By the time you read this, a few of us will have been on our first social outing since September 2019. We went to Bletchley Park and stayed over in Buckingham for a couple of nights, also visiting a local Turkish restaurant – something a bit different!

The Cory Band are performing at a concert in St. Lawrences at Ludlow on November 6th – a night not to be missed and an inspiration for any player to progress to a higher standard. Do try and get yourself a last minute ticket via the band's website.

Sunday November 14th brings Remembrance Sunday and the parade led by the band down the High Street, an important date in the Cleobury calendar. We also have our first carol playing on the same day (groan) seems to be earlier than ever this year! De Beers garden centre are holding a Christmas Craft Fayre.

The CMCB Christmas Concert will be held this year in St Marys Church on Saturday December 11th at 7.30pm. £10 per ticket to include mulled wine and mince pies. Get your ticket

booked early with Amanda on 01584 891199 or ask any band member.

Katie Griffiths

THE READING GROUP

'The Bell Jar' by Sylvia Plath was never going to be a fun book, being based on Sylvia's life, that ended in her suicide. The best word found to describe it was enlightening. There was some humour in the first chapters, later mostly sadness. Her style of writing was admired by some though not all. Overall it was an interesting read, our understanding of the story was enhanced by the recent television documentary. It is also an historical document, depicting life in the 1950's, especially the different expectations regarding men and women. The insights into psychiatric care and treatment were of the time and rather frightening. Let us hope that today people have a better understanding of mental health and treat people with kindness and understanding.

The read for the coming month is 'The Past' by Tessa Hadley, an author we have not come across before. It promises us a tale of four siblings and their families meeting together for part of a

summer. No doubt with problems. Will exchange our views at the library on November 15th.

Deana Kimber 271754

SEVERN

CHRISTMAS FAIR

Severn Hospice Crafters are holding a Christmas Fair at Broome Park Farm, Catherton Road, DY14 0LB on Saturday 27th November, 11- 3pm. There will be hand crafted gifts, a Bric a Brac stall, Tombola and Raffle. Flowers by Fiona will have a stall selling Christmas Wreaths and decorations. Seasonal refreshments will also be served. Within walking distance of Cleobury, come and buy handmade Christmas gifts for family and friends. All proceeds to Severn Hospice.

KIDDERMINSTER AND WORCESTER PROSTATE CANCER SUPPORT GROUP

There's a new local support contact for this very friendly and helpful group. It's Derek Scully, who's on 01886 833 236. He phoned to see if the editor needed any help, a good sign of a determined operator.



Grainger Jones your local financial adviser

- Grainger lives in Cleobury Mortimer giving the residents and surrounding areas a dependable financial planning service.
- **Wealth Management**
 - **Retirement Planning**
 - **Investments & Savings**
 - **Family & Business Protection**

An initial consultation is available at no charge
To book an appointment or just have a chat, please contact Grainger below.

tel: 07974 100089

email: grainger@meridenfp.co.uk

website: www.meridenfp.co.uk



Domestic oil-fired boiler breakdown & maintenance services.

27 years' field-service experience with leading UK boiler manufacturer Worcester Bosch.

Donovan Taylor

Tel: 01299 828670 or 07807 837040

donovan.taylor@sky.com

www.greenstar-boiler-repairs.com

Caring about your environment and providing an honest, professional & reliable service you can trust

SINGING LESSONS

Professional singer and experienced teacher recently

moved to this area

Vacancies available

All styles, ages, standards welcome

Contact Angela Kazimierczuk on

07870 506655

BARN STORED LOGS FOR SALE

Delivered within ten miles
of Cleobury Mortimer.
Longer journeys £10

PLEASE CALL:
0781 366 8353 or
01584 781421



COUNTRY SKILLS

CPCS/NPTC Approved - fully insured

- Outside Renovation
- Tree Surgery, Hard Landscaping
- Slabbing and Fencing
- Decking, Roofing
- Contract Mowing

Call for a free quotation

R. Price & Sons

Mobile: 07967 140720 Email: roger@country-skills.co.uk

Painter/Decorator Christine Smith

Friendly, local, female professional. Any job considered: including Indoor/outdoor, walls, windows and doors, wallpaper & preparation. DBS checked. Fairly priced. Free quotes.

Call: 07977296335

E: clsartcontact@gmail.com



Precious Memories

Funeral Celebrant - Carole Clayton

07971 543790 - 07942 774560

South Shropshire - North Herefordshire - North Worcestershire

Celebrant@hoskingsfuneralsdirect.co.uk

www.hoskingsfuneralsdirect.co.uk/celebrant

FB: @preciousmemoriescelebrant

Everyone has a story to tell - I'd be honoured to be the one to tell the story of your Loved One.



Hobbs Building Services

EST 25Years.

A Total Plastering, Maintenance and Building Service for your home,
business and outbuildings.

Insurance work undertaken

Emergency call out service for general plumbing, roofing, boarding up damaged doors and windows. For a free quote please call;

Ian on; 07967190742

Email: hobbsbuildingservice@yahoo.co.uk Or Call/Text Kelly on; 07790085307

Stepping Out! Who's Walking, When and Where.

THE FOOTPATH ASSOCIATION

Autumn is now in full swing, time to put away walking shorts and dust off fleeces and waterproofs. As the days get cooler it is a pleasure to see the changing colours while exploring the local countryside. CMFA have several walking options to tempt you out of the armchair!

The CMFA monthly Social Walks are longer and often go further afield. They are usually 6 to 9 miles with an opportunity for pub food or picnic at the end. For example in September the ramble went from Broombank via Lindridge and Frith Common with lunch at The Live and Let Live. The October walk was around Aston on Clun with lunch at The Kangaroo. If you like company while walking give one a try. CMFA website has contact details. The walks are for members but visitors are welcome. You can join CMFA if you enjoy the experience and want to return. Last month nineteen people enjoyed the Walking for Health trip. Starting at the Blackstone car park near the River Severn and going

upstream along the river bank to Bewdley. We went through the Queen Elizabeth Jubilee Garden to The Garden Kitchen outdoor café for refreshments. The return to the cars was along the opposite river bank. It was lovely to welcome back one of our regular leaders after a double hip replacement!

CMFA Walk 21, Dinmore Dally was at the core of the five mile route for the Parish walk on October 3rd. The heavy rain during the previous days meant that paths across the ploughed fields were muddy and sticky. However, we managed to bypass these areas and keep our boots clean. We were grateful that footpaths along our route had been cleared by CMFA and other folk. Only five people were able to attend but they all had a very enjoyable walk with far reaching views of the Cleve Hills. The next Parish Walk is on November 7th starting at Cleobury Market Hall at 10.am.

The October work party headed to Milson to replace a rotten stile with a kissing gate. The autumn rains make digging holes easier and fewer

aching backs. A word of praise and thanks to all the members of the work parties for their hard work and dedication. Due to their efforts the paths in the Cleobury area are a pleasure to walk and enjoy. New volunteers are always welcome so if you are interested please see the contact details on the website www.cmfa.co.uk

Veronica Hargreaves

WALKING FOR HEALTH

This month's walks are on Wednesday the 10th and 24th, starting as ever from the Market Hall. It's a neat arrangement, as the party get back to the Hall in time for coffee and cake at a remarkable price.

ROCK PATHFINDERS

November walk dates:

Thursday the 4th, 10.00am start from

NT Sawmills CP, Dudmaston Estate, Quatt, WV15 6EA

Thursday the 18th, 10.00 am start from:

The Roebuck Inn, Brimfield, near Tenbury Wells. SY8 4NE

www.rockpathfinders.uk

or ring Alan on 01299 400304



COACH HOLIDAYS & DAY TRIPS

Discover your next holiday by coach! Book with Whittles Coaches, established for over 95 years and based in Kidderminster. Whittles Holidays include:

- ✓ Home Pick Up & Return Service from your Door!
- ✓ Comfortable & Relaxing Coach Travel
- ✓ Be Looked after from Start to Finish by our Drivers
- ✓ High Standard Hotels with Good Food
- ✓ Included Sightseeing Excursions
- ✓ Afternoon Tea on Outward Journey
- ✓ Portering of your Luggage

LOW DEPOSITS - BOOK FOR ONLY £50 PER PERSON!

CALL 0845 485 2434 FOR YOUR FREE BROCHURE | WWW.WHITTLECOACH.CO.UK

Mark Pearce

Landscape, Design and Rustic Garden Furniture

- Fencing
- Patios
- Drives
- Decking
- Garden Sheds
- Summer Houses
- Fence Panels
- Log Stores



And Much More

Top Quality Fully Treated Timber Products

Mobile: 07875425028

Tel: 01746718404

Robert Bradley Logs

07794 798616



*Seasoned Firewood, Hardwood,
Softwood or Mixed loads of logs.
Free Local Delivery*



Fresh milk and cream from
Cleobury Mortimer

www.mawleytownfarm.co.uk

01299 270359



SKELLERNS

DOORS & WINDOWS



- UPVC Fascias & Guttering
- UPVC Windows, Doors & Conservatories
- General Home Improvements
- Re-roofing & general building work
- Replacement Glass
- Patio Jet Washing



Free No-Obligation quote. FENSA registered company with years of experience

Call Mike on: 01886 812250 or mobile: 07814 577739

www.skellersndoorsandwindows.co.uk



Beaver reintroduction in Shropshire? I was slightly surprised recently to find a communication from the Shropshire Wildlife Trust in my letter box asking for my opinions on this project and wildlife in general. (Incidentally I don't live in Shropshire, but a substantial part of the Wyre Forest lies in the southeast of the county). I wasn't surprised to find that it was a member recruitment exercise, but the Beaver reintroduction is due very soon at the Old River Bed nature reserve in Shrewsbury. As the SWT says, 'The site is swampy and great wetland habitat for insects, fish, birds and mammals but the ecosystem is impacted by the fast growth of trees such as willow, which would eventually dry the site out and dominate over the swamp plants if left unchecked. Beavers would help to manage the scrubby trees through their ability to "coppice" trees and reduce their impact on the sensitive wetland habitat. The Old River Bed is owned and managed by Shrewsbury Town Council, who have managed the site with contractors and grazing livestock for many years, both of which come at a high financial cost. Re-introduction projects are already underway in several locations across England and have proved to be hugely successful in managing wetlands more sensitively and for a fraction of the cost'.

So will we see Beavers making their way into the Wyre soon? So far the reintroductions have been contained within enclosed wetland sites so it's very unlikely but escapes aren't completely out of the question. I can imagine that many of us would be fascinated to have them as an addition to our local fauna but I can't rule out a degree of irritation at unsanctioned tree fellings and waterway re-design! There seems to be no doubt, however, that their activities would be a great help in flood control.



Another mammal that may re-appear in the area after a long absence is the Pine Marten. They have gradually disappeared from nearly all of England because of the reduction of their woodland habitat and their persecution by gamekeepers, although a small number seem to have held on in the South Shropshire Hills. Individuals from a viable population in the north of Scotland were re-introduced into mid-Wales from 2015 to 2017 and the Forest of Dean in Gloucestershire in 2019 to reinforce the local animals; their success is being monitored. You can see a delightful film, 'Wild again in Wales', at www.vwt.org.uk/projects-all/pine-marten-recovery-project/. They are agile tree-climbers, nocturnal, elusive, and similar in appearance to their relatives: weasels, stoats and polecats. Their diet includes fruit, insects, small mammals and both birds and their eggs, although there doesn't seem to be any evidence that they have a harmful effect on woodland bird numbers. What does appear to be significant is the reduction of Grey Squirrels where the Martens return – a definite bonus for forest managers infuriated by the damage that the Greys do to growing trees, and a hopeful sign that Red Squirrels could also return one day.

Linda Iles

WE NOW PRINT 1,000 COPIES AND DISTRIBUTE THROUGHOUT THE LOCAL AREA. WITH OVER 700 VISITS A MONTH TO OUR WEBSITE, THE CLARION IS ONE OF THE STRONGEST LOCAL ADVERTISING SOURCES. FOR DETAILS OF OUR SERVICE THAT REACHES THE LOCAL COMMUNITY THROUGH THE YEAR, CONTACT THE EDITOR ON 01299 270642 OR editor@cleoburyclarion.co.uk



Home Support Services

All staff enhanced DBS checked with over 20yrs experience and training within the local authority/social services mainstream and dementia care sector. Fully insured.

Are you in need of support with the following basic day to day tasks?

Assistance during the day or night

Companionship

Shopping/Household tasks

Completing Forms

Pet Care

Attending social events/ appointments

Contact Liz

Tel: 01299 271623

Mob:07826 929222

liz@lifelifeathome.co.uk

Other support services available on request.

www.lifelifeathome.co.uk

Contact Tracey

Tel: 01299 211660

Mob:07957 659909

tracey@lifelifeathome.co.uk

BILL'S QUALITY METALWORK

5 GREENFIELD ROAD, CRAVEN ARMS SY7 9QU

Manufacturing Made to Measure Gates and Railings,
Balconies and Staircases, Handrails, Carports, Structural Steelwork
and Mobile Welding Service.

Phone Bill on 07973 248 016 Mobile or 01588 673 914

Office for a free quote



Electrical & Security

Tel: 07973 112463 (Anytime)

01299 489223



- Full/ Part Installations
 - Existing System Updates
 - Alarm & Security Systems
 - PAT Testing
 - Domestic and Commercial Properties
 - Electrical Problems
 - Landlords & Electrical Safety Certification
 - Upgrades
 - Free Callouts and Quotes
 - For Existing and New Installations and Security.
- Part P + Full Scope Registration
Card Payments Accepted



Fast Friendly Service, No Job Too Small



FOR ALL YOUR ACCOUNTANCY REQUIREMENTS

www.fairway-accountants.co.uk

Head Office: 01299 822283
team@fairway-net.co.uk

Simon Hector: 07896 439594
sjh@fairway-net.co.uk



Philip Dunne's Letter from Westminster

COP26 UN Climate Conference

In this first week of November I shall be attending the COP26 United Nations climate change conference in Glasgow. Given the disruption of the pandemic, I am relieved the conference is finally able to go ahead, a year after originally planned, but thankfully with meetings being held in person, with remote participation for those unable to travel.

I am attending in my capacity as Chairman of the Environmental Audit Committee, and will be co-chairing a session for parliamentarians looking at how we hold our respective Governments to account for delivery in coming years on their pledges for action, made through the Nationally Determined Contributions. The UK government has been clear G20 countries should make new commitments in their own Nationally Determined Contributions - setting out interim targets and immediate action to reduce emissions.

In terms of broader ambitions, the UK is seeking to gather support and agreement at the conference to eliminate coal dependency; to follow the UK in abandoning UK fossil fuel internal combustion vehicles; for the richest countries who have historically produced so much of the world's carbon to support other countries to go green with funds of \$100 billion a year; and to plant more trees to restore the world's natural habitat.

If we are to succeed in stopping climate change, we need an international consensus. When the UK accepted the Presidency of the G7, under 30 per cent of the global economy had signed up to a net zero commitment - that figure has now increased to 70 per cent. Around 120 countries are committed to or are developing long-term climate neutral plans. So there has been progress – but now

countries, including the UK, must show we will match words with action.

I have called consistently for clearer plans from the UK government in meeting its climate commitments. We have had positive ambitions, but what drives effective change is a clear plan that gives both direction to industry and sends clear demand signals to investors.

The scale of the challenge is huge. The latest Intergovernmental Panel on Climate Change report found that climate change is affecting every area of the globe and without immediate action, rising global temperatures may lead to increased heatwaves, with greater risk of wildfires, flooding, rising sea levels, arctic ice melt and more devastating consequences. COP26 is the opportunity to develop an overarching and deliverable plan for countries across the world to put an end to the ravages of manmade climate change.

There will be some for whom, for whatever reason, this conference will never go far enough; and others who will believe it is seeking to move too far too fast. But we should not allow either pessimism or scepticism to cause us to abandon our efforts to secure real change, and lasting international commitments to tackle this issue.

So I look forward to attending and helping to scrutinise the effectiveness of the conference. As Chairman of the EAC I shall be chairing a final session of the Commons' Committee on COP in the weeks following COP26, which I was instrumental in setting up among ten select committees. We shall use this to start the scrutiny process of how the Government plans to deliver its own pledges.

Philip Dunne

The Miah Brothers Famous Spice Empire

Bringing great taste and value to Cleobury Mortimer for 17 years



17 High Street, Cleobury Mortimer
6-11pm 6 Days a Week
Acclaimed Indian restaurant with wide range to suit all tastes.
Sunday Buffet from 12.00pm-9.00pm.
As much as you can eat for just £9.95 a head.
Free home delivery up to 5miles
Reservations: **01299 270419**



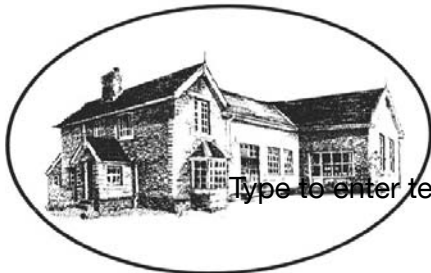
6/7 Church Street, Cleobury Mortimer
'Fine bar, excellent food at prices to suit all pockets'
Top Value dining.
Our Dine In Meal Deal gives you a: starter, main course and naan or rice for just £9.95.
Tuesday to Sunday, 6.00-11.00pm
Reservations: **01299 271485**



57 High Street, Cleobury Mortimer
6-11pm Wednesday- Sunday
Dine at home with the same great quality our restaurant offers.
Monday- Tuesday collect Takeaways from Spice Empire:
Tel: 01299 270419
Free home delivery up to 5miles.
Orders: **01299 271604**

Bayton Church of England Primary School

- Be the best you can be, as a child of God -



Type to enter text

www.baytonceprimary.co.uk
01299 832393
office@baytonpri.worcs.sch.uk

Call or email to book an appointment to visit our school and meet our staff.

"We offer an alternative and unique Primary School experience, in an idyllic rural setting. A small family-orientated school with a caring ethos and traditional values, coupled with excellent results. If you want the very best for your child, come and visit us."

*Ms. Jolanda Simmonds
Head Teacher*

**Spaces currently in Years 4, 5 & 6, and we are also welcoming Parents & Carers of September 2019 intake.
Governor vacancies – please call for information**

Rated "Outstanding" in our latest SIAMs inspection (March 2018).

Friendship – Hope – Perseverance – Compassion – Trust – Forgiveness – Responsibility – Respect – Truthfulness

Our school vision: We aim for everyone to be a part of our community, be life-long learners who are confident, enthusiastic, valued and reach their God given full potential.



ADVENT SOUP LUNCHESES

Neen Savage WI are holding the popular Advent Soup lunches in December. They will take place every Thursday from 12.30 to 1.30pm in the upside room of the Market Hall. Just £5 for homemade soup, crusty bread and a traditional pudding served with cream. 2nd December it will be Apple Crumble, 9th Dec - Sticky Toffee Pudding, 16th Dec - Pineapple Upside Down Cake and 23rd Dec - Mince Pies. The Severn Hospice Support Group will be running a raffle with great prizes, all proceeds for Severn Hospice. *Catherine Evans*

YOUTH

PARTNERSHIP A.G.M.

Representatives from member bodies met on October 18th and Interim Officers were re elected:

Chairman Madge Shineton, Vice Chair Garry Halpin, Secretary Helen Smith, Treasurer David Haywood.

Members emphasised the importance of the continuation of the Group and the need to widen the Group to include all who have the responsibility for young people in our local Parishes.

Groups gave updates on "where now" following COVID

disruption and discussions widened to include Queens Green Planet 2022 celebrations and plans for joining the Cleobury Festival in June 2022 to promote youth opportunities across Cleobury Parishes.

We welcome interest from across the area to join in our discussions of future plans.

C o n t a c t

Madge.shineton1@gmail.com. or 01299 271186 and come along to our next meeting on December 6th at 10.00am at the Sports and Social Club, Cleobury Mortimer.

Madge Shineton

CLOWS TOP VICTORY HALL

The £10,000 grant from the National Lottery Community Fund means arrangements are now being made to replace the roof of the Hall in the Spring of next year. The inauguration of the Halls own WIFI System is imminent and should enhance users' experience . The Committee have other projects in the planning stage aimed at bringing the facilities right up to date. Chair Steve Woodison said "The Grant funding has given us a boost and is encouraging us to make sure

this local resource is ready for everyone to enjoy".

Recently the Hall resounded to the sounds of Sunjay, and his harmonica playing accompanist Lee, who provided the audience with a wide ranging, thought provoking and emotionally stimulating range of songs and stories.

Yardbird Arts are working with the Hall Committee to produce a Rock and Blues Night on Friday 26th November featuring Remi Harris, Dave Small, Darren Beale and Shane Dixon. Tickets are available by ringing Dani on 01584 881564 or 07814 986868 or by e mail at: yardbirdarts@gmail.com

Social evenings provide a warm and friendly environment for local people of all ages. 5th and 19th November, with a quiz starting at 7pm.

For details of what is happening at the Hall, please ring the CTVH Mobile 07379 959895, visit Clows Top Victory Hall Facebook page or e mail clowstopvictoryhall@gmail.com

Nigel Caldicott

No.19
The Beauty Room
with Jane Weaver

Wash away the aches, pains and stress of everyday life by indulging in a relaxing Swedish massage, any combination of back, shoulder, neck, arms and legs, ½, ¾, 1 or 1½ hrs, or treat yourself to a manicure/pedicure, waxing or tinting.

Telephone consultations available to discuss any personal requirements, treatments available at No.19 or in your own home. Contact Jane on 07968 882269 or email 19thebeautyroom@gmail.com

Just like the lotus flower we too have the ability to rise from the mud, bloom out of the darkness and radiate into the world!



Soft furnishing and
Interior Design Services

Masquerade
Fabrics Limited

01299 271 680
36 High Street Cleobury Mortimer near Kidderminster
Worcestershire DY14 8DQ

Retailers for Sanderson, Harlequin, Monkwel
Crowson and many more...

Comprehensive design, measuring and fitting service.





The Lamp Restaurant

15a High Street, Cleobury Mortimer, Shropshire, DY14 8DG
01299 272785 or 01299 271313
Fully Licenced and Air Conditioned
Serving Bangladeshi & Indian Cuisine



The Lamp Restaurant winner of Currylife award chef of the Year

Open 7 days a week from 6.00pm until 11.00pm

The Lamp's cuisine, inspired by Sylhet, the second city of Bangladesh, offers a wide variety of choice along with established favourite dishes and a selection of Chef's Specials.

The wide variety of starters and accompaniments chosen by our chef to complement your main course.

Takeaway service offers free delivery up to 3 miles for orders over £15.00.

Find us on Facebook: Lamp Inn Cleobury Mortimer



Michael Coombes Roofing & Building Maintenance.

Complete Re-roofing, Roof repairs, Pointing & Chimney repairs.
Slabbing & Brick work
Wall & Floor Tiling
Painting & Decorating

Over 20 Years experience in the Cleobury area.

Call Michael on 07854 047413

APSupplies

- ◆ Specialists in equestrian and field maintenance
- ◆ Haylage, hay and straw supplied
- ◆ From chain harrowing to mowing and baling
- ◆ Fencing to ménage maintenance
- ◆ Woodland management and coppicing
- ◆ Concrete pads and sheds all at competitive rates



APSupplies.....Call today for a chat !

Ant Harman: 07779239393



TURNERS GATES

bespoke sizes at standard prices



A small family run business specialising in quality wooden gates to suit all entrances.

Visit our website: www.turnersgates.co.uk

Drop us an email: turnersgates@outlook.com

Or give us a call on: 01299 270 965



Andrew Jordan (Jordy)
JRD.GROUNDWORK@GMAIL.COM

Moors View
Moors Lane, Oreton,
Kidderminster, Worcestershire
DY14 8RH



AVAILABLE SERVICES

- Foundation & footings
- Concreting
- Driveways
- Ditching
- Drainage
- Landscaping
- General Building
- Fencing
- Hedgecutting
- Digger Hire
- All Jobs Undertaken

TIME TO CLEAN YOUR OVEN? LET US DO THE JOB YOU HATE

AS SEEN
ON TV

- Ovens
- Grills
- Extractors
- Filters
- BBQs
- Microwaves
- Hobs
- Ranges
- AGAs

Call or go online today for your free estimate



07913 123543
ovenclean.com





A small local business.

I am a qualified lawyer with over 30 years experience offering a personal and approachable service.

I undertake specialist will drafting, lasting powers of attorney, deputyship applications and probate.

"I've used Mandy at Westons Wills and Probate numerous times over recent years covering all aspects of her expertise. Her guidance on the way forward and solutions to issues that she has suggested has been excellent. She is extremely communicative and responsive, and handles difficult situations with compassion and empathy. I have happily and confidently recommended her services to everyone I know that would benefit from her services."

"Mandy Weston of Westons Wills and Probate is a very professional and knowledgeable person. She has now become my 'go to' legal adviser and has taken on many legal tasks for me and my family. Wills, Probate, Inheritance Tax and Powers of Attorney. I trust her judgement and experience to act in mine and my family's best interest. I would highly recommend her legal services to anyone."



Contact me today

"Great expertise and a friendly professional manner"



Contact Mandy Weston **Phone** 01299 405873 **Mobile** 07931 411733

Email mandy@westonswillsandprobate.co.uk **Website** www.westonswillsandprobate.co.uk

Address The Old Snuff Mill Warehouse, Park Lane, Bewdley, Worcestershire DY12 2EL



**WYRE FOREST
WOODCRAFT**
purpose made joinery

**Specialists in the Manufacture
of Purpose Made Joinery**

- Tailor Made Timber Windows
- Traditional and Contemporary Style Timber Doors
- Custom Made Staircases
- Bespoke Conservatories
- Made to Measure Gates



TO SEE EXAMPLES OF OUR FULLY FACTORY FINISHED JOINERY VISIT OUR WORKSHOPS AND SHOWROOM

www.wyreforestwoodcraft.co.uk

01562 68100 | enquiry@wyreforestwoodcraft.co.uk

Oldington Lane | Firs Ind Est | Kidderminster | Worcestershire | DY11 7QN



Cleobury Mortimer Benefice
Church services throughout the Benefice in November

St Mary's Cleobury Mortimer

Sunday 7th November – 10.00am Eucharist

Sunday 14th November – 8.30am Eucharist &
10.50am Remembrance Service

Sunday 21st – 10.00am Eucharist

Sunday 28th – 10.00am Eucharist

St Michael and All Angels', Hopton Wafers

Sunday 7th November– 9.30am Eucharist

Sunday 14th November – 10.00am Remembrance Service

Sunday 21st November – 9.30am Eucharist

St John the Baptist, Doddington

Sunday 7th November– 11.15am Eucharist

Sunday 14th November – 10.50am Remembrance Service

Sunday 21st November – 3.00pm Evening Prayer

All Saints', Neen Sollars

Sunday 7th November– 11.00am Village Worship

Sunday 14th November– 10.50am Remembrance Service

Sunday 21st November - 11.00am Village Worship

Sunday 28th November– 11.00am Eucharist

St George's, Milson

Sunday 14th November – 10.50am Remembrance Service

Sunday 21st November 11.15 Eucharist

St Mary's, Neen Savage

Sunday 7th November – 6.00pm Evening Prayer (BCP)

Sunday 14th November- 10.50am Remembrance Service

Sunday 21st November – 11.00am Eucharist (BCP)

St John the Baptist, Kinlet

Sunday 14th November – 10.50am Remembrance Service

Sunday 28th November – 6pm Evening Prayer (BCP)

The Church Office is open Tuesday and Thursday from 9.00am-3.00pm
Contact details: Grace Johnson cleoburychurch@hotmail.com
Tel: 01299 272916



Remember to follow us

Doddington Lodge Post



AUTUMN ACTIVITIES

We have had a busy start to the crisp autumn season. The residents have been busy with Rachel & Pat collecting flowers & vegetables from the Doddington Lodge gardens ready to be cooked by our fabulous chefs.

Throughout the home, it has decorated with beautiful autumn flower arrangements, also created by our residents along with autumn handmade salt dough ornaments.

Everyone has loved getting involved. We have lots of activities planned, especially arts & crafts with Christmas just around the corner.

Join our team

Becoming part of the Doddington Lodge family is really something special. More than ever we are looking for the right individuals who can really make a difference. If you believe you have the right skills please send a covering letter with your CV to our recruitment team.

Email: cassie@doddingtonlodge.com



www.doddingtonlodge.com | E: enquiries@doddingtonlodge.com | T: 01584 707084



DODDINGTON LODGE WELCOME SPECIAL VISITORS

We have had many very special visitors over the last few weeks. It was so exciting to meet Pip the Skunk, Lucy the Armadillo, George the Bearded Dragon, a Pygmy Hedgehog and a tiny Lesser Tenrec.

Everyone absolutely loved the visit. Thank you to Trevor Hill Falconry for bringing along all his wonderful animals to share with our residents & team.

We also had a special visit from Liz Vanegas de Quickenden & Marin. The residents adored Marin, he was so gentle and enjoyed all the treats.

At Doddington Lodge we understand animals are a big part of our residents well being. We have pets as companions to love and care for, and they do just the same for us. Petting a dog, as you probably know, comes with a sense of love, care, and happiness. The bonding element of being around a furry companion can have an exceeding amount of health benefits, especially when dealing with an illness, mental or physical.

Animal therapy has become widely used throughout care facilities, such as care homes and assisted living homes, as a technique to help the elderly when dealing with conditions such as chronic illnesses, disabilities, or depression. Animals are not only adorable and promote health benefits, but they are also proven to present hormonal differences in the brain when bonding with each other. As we all know, there are many ways in which we can get that “happy” feeling. Whether that being reading our favourite book, listening to our favourite song, or simply watching a sunset. However, the reason this technique is being introduced so widely is due to the scientifically proven health benefits it has to offer the elderly. Not only improving their quality of life but adding years to it through the decreased risk in cholesterol levels, heart attacks, and strokes.

Healing is a big factor in animal therapy. When the elderly interacts with an animal it gives them companionship, a better quality of life, and a decrease in health problems. We want our residents to love their home, feel healthy, happy, and enjoy life and animal therapy is a technique that will boost everyone’s mood and we love our visits!



OPERATION CHRISTMAS CHILD SHOE BOX APPEAL



A simple shoebox gift packed with love can have a huge impact & bring joy to children all around the world! Doddington Lodge is supporting this very important appeal and is your local shoe box drop-off location. We look forward to seeing you with all your boxes.

National Collection week is 15 - 22 November 2021

For more information please visit:
<https://www.samaritans-purse.org.uk>

www.doddingtonlodge.com | E: enquiries@doddingtonlodge.com | T: 01584 707084



COMEDY NIGHT

**Lord Horatio Nelson:
England's Greatest Hero?**

Hopton Wafers Village Hall

presents

Max Keen's

HILARIOUS HISTORICAL TALKS

7:00pm Saturday 27th November

***Five star buffet included – wine & beer @ the bar**

Contact - treasurer@hoptonwafersvillagehall.uk / t. 01299 270047

Tickets £12:00

*** Sponsored by Hopton Court Estate and Hopton Wafers Village Hall Trustees**

BAYTON'S BULB BONANZA

This is a lovely idea - they're very good at ideas in Bayton. The Parish Council and the Village Hall Committee have got together on this. Volunteers meet at the Parish Church car park at 11.00am on Sunday the 7th. Bulbs will be given out and the volunteers will plant them, using their own tools, in selected areas. To round it all off, refreshments will be served in the village hall. Wonderful idea!

NIGHTINGALE NURSING FUND

The trustees of the fund eventually held an Annual General Meeting on 17th October at the Sports and Social Club, Cleobury Mortimer.

The three trustees were voted to continue for the coming year: Gill Shorter, Treasurer, Debbie Brown, Secretary and Rosemary Abbiss, Chairman.

During Covid we have continued to fund extra care for patients in crisis although there haven't been quite as many calls for help as in previous years. Fundraising

was discussed and it was decided to look at it again when risk of infection from Covid is less.

We would welcome any volunteers who would like to know more about the fund or have ideas for fundraising. Please feel free to contact any one of us and we will willingly tell you more about the fund..

Or the web site is www.nnfund.co.uk where you will find the information regarding the fund.

Rosemary Abbiss

LORD NELSON IS COMING TO HOPTON WAFERS!

It's not often that a sea captain makes it this far inland, but this is a very special occasion for a major figure in British naval history. Admiral Lord Nelson, in the form of comedian Max Keen, will tell of brave days at sea and maybe in the tavern as well. Max is a favourite in the Midlands and it should be a riot of an evening.

Starts at 7.00 on November 27th, the tickets at £12.00 a head include a five star buffet meal and of course there'll be a bar for those who fancy a tot

of the Admiral's favourite rum or more. Contact treasurer@hoptonwafersvillagehall.uk or call 01299 270047

The last time I went to a gig in Hopton village hall it was great value. See you there this time.. *JR*

FLICKS IN THE STICKS

Saturday the 20th this month sees another good piece of cinema on offer. It's "Green Book", a well regarded story of a tough white bouncer driving an African-American classical pianist through the Southern States on a concert tour. Starts at 7.30, admission costs just £4.00.

If you think you'll need a cushion, good advice is to take your own. They did have a big box of them but that's gone missing; it seems they were a Covid infection risk so the lot were destroyed. It's good to know that the safety of Flicks supporters is considered so carefully.

Did we mention that there's a bar? Well of course there is!

Isn't it good to have Flicks back in this part of the Stick again? And so much more of a social occasion than watching the TV.



**CLEOBURY
THE COUNTRY CENTRE**

Contacting us:

t: 01299 272 300

e: business@cleoburycountry.com

www.cleoburycountrycentre.com

Training Courses for Nov 2021:

EFAW 1 day—24th Nov—£73

Food hygiene L2—26th Nov—£70

First Aid at Work 2 day Refresher—29/30th Nov—£140

First Aid at Work 3 Day—16,17,18th Nov—£190

EFAW/Paediatric First Aid combined—1/2nd Nov—£145

All course costs are + vat

For more information on courses or if you require a booking form please contact the centre.

Cleobury Country Farmers Market

Saturday 20th November 9.30—12.30

Cleobury Country Trade Card 2022

contact us if you'd like to be in it!

IRENA

S.A.C DIP. (DIST). N.C.F.E. M.C.F.H.P.
FOOT HEALTH CARE PRACTITIONER



All your foot problems dealt with:-

- Foot health check • Verrucas etc.
- Corns • Medical Manicure
- Callus • Medical Pedicure

Free vascular Doppler Check of your feet

The Old Farmhouse
Button Bridge, nr Bewdley
DY12 3AW



Mobile visits available
01299 841 277
hessins@gmail.com

Paul Harding



Tree Services

- Tree surgery and felling
 - Woodland thinning & maintenance
 - Hedge trimming & grass cutting
 - Supplier of hardwood logs, kindling and garden bark
 - NPTC certified fully insured. Domestic and commercial work undertaken.
- Tel 01584 890 993 Mob 07970 878 224



Cleobury Chiropody

Janet Manley

Qualified Chiropodist
MSSCh. MBChA
BSYA (reflex) REIKI Master

H.C.P.C Number CH22527

Tele:- 01299-272841
Mob:- 07805-268439

Email: janetpmanley@yahoo.co.uk

2, Tenbury Road,
Cleobury Mortimer,
Kidderminster,
Worcs.
DY14 8RB

KIDDERMINSTER CARPETS LTD

(FORMERLY KIDDERMINSTER CARPET SPECIALISTS)

FAMILY BUSINESS, OVER 35 YEARS' EXPERIENCE
DOMESTIC & COMMERCIAL

COMPETITIVELY PRICED, QUALITY PRODUCTS:
CARPETS, SAFETY FLOORING, VINYL, LAMINATE,
WOOD FLOORING, KARNDAN AND AMTICO

SAMPLES BROUGHT TO YOU AT YOUR HOME OR
BUSINESS AND FREE QUOTATIONS OFFERED

OFFICE: 01299 251 527 MOBILE: 07836 385 022
www.kidderminster-carpets.co.uk



BAGGINSWOOD

Bagginswood, Cleobury Mortimer,
Nr Kidderminster, Worcs. DY14 8NB
Telephone: 01746 718732

Heath Farm Meats, Bagginswood

Opening Hours

Wed 8am to 5.30pm, Thurs 8am to 7pm, Fri 8am to 5.30pm, Sat 8am to 12.30pm

Straight from Our Farm to Table

We rear & sell all our own beef, pork, lamb & mutton through our shop on farm.
We also make our own flavoured sausages, burgers, home cured bacon,
gammon etc. No order to large or small.

Hams ● All Poultry ● Honey ● Mawley Milk & Cream ● Ashley's Cakes & Bread ●
Jams ● Eggs ● Cheeses ● Apple Juice ● Potatoes ● Meat Pies ● Sticks & Logs

Telephone 01746 718732 with your order to arrange a date & time for collection

The Social Calendar for November

| Date | Time | Details | Contact | Telephone |
|------------------------|------------|---|---------|--------------|
| Thurs 4 th | | GREEN GARDEN WASTE WHEELIE BINS EMPTIED TODAY | | |
| | 10.00 | Rock Pathfinders walk from NT Sawmills, Dudmaston Estate, Quatt. PAGE 21 | | |
| Sat 6 th | 10.00 | Christmas Sale in Bayton Church. Many bargains. PAGE 7 | | |
| | 7.30 | The Cory Band in concert at St Laurence's Church in Ludlow. PAGE 19 | | |
| Sun 7 th | 11.00 | Christmas Sale at Bayton Church, repeated. PAGE 7 | | |
| | 11.00 | Bayton Bulb Bonanza, planting bulbs in the village. PAGE 35 | | |
| Mon 8 th | 6.30 | The Creative Writing Group gather in the Library. | | |
| Tues 9 th | 7.30am | The Breakfast Club meet at the Golf Club. PAGE 13 | | |
| Wed 10 th | 10.00 | CoCo Coffee Morning at the Market Hall. PAGE 17 | | |
| | 10.00 | Walking for Health step out from the Market Hall | | |
| Thurs 11 th | | BLACK WHEELIE BINS AND RECYCLE BOXES EMPTIED TODAY | | |
| | 12.45 | Far Forest Lunch Club meet in Far Forest Pavilion. | Carol | 01299 272748 |
| Sun 14 th | | Remembrance Sunday. Cleobury Concert Brass will lead the parade. PAGE 19 | | |
| Thurs 18 th | | GREEN GARDEN WASTE WHEELIE BINS EMPTIED TODAY | | |
| | 10.00 | Rock Pathfinders walk from Roebuck Inn, Brimfield. SY8 4NE. PAGE 21 | | |
| Sat 20 th | 9.30-12.30 | Cleobury Country Farmers Market in and around St Marys Church, plenty of traders with lots of Christmas shopping ideas. | | |
| Wed 24 th | 10.00 | CoCo Coffee Morning, upper floor at the Market Hall. PAGE 17 | | |
| | 10.00 | Walking for Health step out from the Market Hall | | |
| | 7.30 | Clows Top Gardening Club AGM at the Victory Hall | | |
| Thurs 25 th | | BLACK WHEELIE BINS AND RECYCLE BOXES EMPTIED TODAY | | |
| Fri 26 th | 7.30 | Rock and Blues Night at Clows Top Victory Hall. PAGE 27 | | |
| Sat 27 th | 10.00 | Table Top Sale at Farlow & Oretton Village Hall | | |
| | 11.00 | Christmas Fair at Broome Park Farm, Catherton Road. PAGE 19 | | |
| | 7.30 | Mowtown & Northern Soul Night at Sapey Golf & Country Club. PAGE 13 | | |
| Mon 29 th | 7.30 | The Nearly Dead Poets Society meet at the Library. PAGE 5 | | |
| | | AND LOOKING FORWARD..... | | |
| Thurs 2 nd | | GREEN GARDEN WASTE WHEELIE BINS EMPTIED TODAY | | |
| | 12.30 | Advent Soup Lunches begin today at the Market Hall. PAGE 27 | | |
| Mon 6 th | 10.00 | Youth Partnership AGM at the Sports & Social Club. PAGE 27 | | |

LIVE & UNLOCKED

Quiz

Questions from March 2020 today

Boris's lockdown rounds—double points

Lacon Childe School

Friday 26th November

7:30pm start

Licensed Bar Raffle £5 per person Max team of 6

Contact the PTA on laconchilde_pta@outlook.com for more details

REMEMBRANCE DAY

Sunday the 14th will be the day when the nation remembers those lost in conflict when they defended this country. The Royal British Legion will gather the parade in Talbot Square and at about 10.45 it will march out and down to the Memorial Gardens for the town's biggest public event of the year.

Quality firewood for sale



£190 for 2 cubic metres of barn stored ash firewood delivered to your driveway.

We source our wood from a reputable and sustainable source.

Can do multiple loads at a discounted rate.

Can deliver up to 20 mile radius from Bayton (DY14 9NA).

Call John Edwards 07531025018



Cleobury Opticians

NHS & private eye tests ♦ FREE children's glasses

FREE NHS glasses ♦ Home visits



| Opening Times- | |
|----------------|--------------------|
| Tuesday | 9am-1pm 2pm-5pm |
| Wednesday | 9am-1pm 2pm-5pm |
| Thursday | 9am-1pm 2pm-5pm |
| Friday | 10am-2pm |
| Saturday | 9am-1pm |

www.cleoburopticians.co.uk

16 Church Street, Cleobury Mortimer, Kidderminster
DY14 8BX

Tel: 01299 270012

Email: cleoburopticians@outlook.com



All Aspects of carpentry work undertaken

Level 3 City & Guilds in Carpentry & Joinery, 20 years of experience

Tel: 07854 032750

Email: duncpearce1@gmail.com

Stewart Mumford Architectural Services Bespoke Architecture

Great value personal service backed up with extensive local knowledge, established links with other construction professionals to ensure comprehensive packages specifically tailored to individual needs.

Initial consultation free of charge.

Specialist in Works to Listed Buildings, Affordable Houses, Open Market Houses, House Extension and Alteration, Barn Conversion and Commercial Projects.



T: 01299 271068

M: 07977 921039

E: office@stewartmumford.co.uk

Simon Morton in the Garden.

And now, Autumn...

As befits a gardening column, each article is more than a little obsessed with the seasons. And as befits a man in his fifties, the author finds it all too easy to use it as a platform to moan - *it's too hot in the Summer, it's too cold in the Winter* - you know the sort of thing.

While I won't apologise for my sometimes unhealthy obsession with the weather (*keen gardeners build an intimate relationship with weather reporters across all channels - it's what we do*), I realise I need to 'wind my neck in' regarding the seasonal moaning. Not only is it a little tedious, but there's also not a fat lot I can do about it. Truth be told, I'd hate to live in one of those places where the seasons don't make their presence felt. I hear the weather in Los Angeles is 'nice' all year round. Sounds hideous.

This meandering waffle is by way of introduction to the main topic on the agenda - Autumn. It's here and is the one season that seems to suffer from a major and persisting PR problem.

Think about it. Spring has it easy - setting its stall out as the season for rebirth, daffodils and sun on your face. Summer promises long languid days, surrounded by beauty and the clink of ice falling into a glass. Winter is the gateway to cosy nights snuggled up in front of the fire, rosy-cheeked walks on crisp ground and tacit approval to overeat.

Autumn, however, seems pretty much focused on death. Yes, the changing colour of leaves might be beautiful, but let's face facts, what we're actually witnessing is death on a major scale. Dead leaves fall to the ground, rot and are only really appreciated as fuel for next year (hello again, Spring).

PR problems or not, there's no doubt in my mind when Autumn has arrived. I'm not just talking about an unexpected cold snap and the inevitable argument about whether it's acceptable to put the central heating on in October. No, I have my own set of very clear signals:

Signal 1 - Topsy Geese

We have a few apple trees in our garden that provide a gargantuan crop of fruit year on year. Our three eccentric geese gorge themselves on the windfall apples as they slowly ferment on the ground (the apples, not the geese). The net result is somewhat blissed out geese, waddling around uncertainly and napping at the drop of a hat.

Signal 2 - Green Tomatoes

I always grow too many tomatoes in the greenhouse. The glut is something of a tradition, meaning that the greenhouse remains full of **green** tomatoes long after the sun has lost any strength or willingness to turn my crop the proper shade of red.

Thus the internet search for things to do with green tomatoes commences (don't say chutney - our cupboards are straining under the weight of jar upon jar of the stuff, most of it completely inedible).

Signal 3 - The Annual Cider Making Debate

The annual glut of apples always prompts discussion about making our own cider, the only enthusiastic drinker of which is our 16-year daughter (under close supervision, obv's). We will inevitably talk about getting a press and doing the whole 'living off the land' thing, however, memories of previous juicing experiments which resulted in revolting apple sludge, which in turn led to slightly dicky tummies. Thankfully the whole idea is put to bed for another year. And then, of course, there are the leaves on the ground. So many damned leaves.

I can feel a moan coming on, so I'll conclude here. I'm off to enjoy Autumn and laugh at some drunk geese.

Simon

BRANSON AUTOMOTIVE Ltd



Passion
for PERFECTION

JOB OPPORTUNITY **VAN BASED AUTOGLYM SALESPERSON** **The World's Finest Car Polish**

Branson Automotive Ltd are one of the UK's most successful Autoglym franchise distributors and are recruiting a Van Salesperson for the Birmingham and West Midlands area based in Cleobury Mortimer.

This is a challenging position maintaining and driving new business within an agreed customer base selling a market leading brand. Excellent communication skills and customer focus is essential. Previous selling experience is ideal but not necessary as training will be given.

You must have a full UK driving licence ideally with category C1. A competitive salary package will be offered.

If you feel that you have the necessary attributes and would like to join our winning team please forward your CV to:

Branson Poyner, Branson Automotive Ltd, Newhouse Farm, Tenbury Road, Cleobury Mortimer, Worcester DY14 8RD. Email bransonautomotiv@aol.com, Tel: 01299 832900 or 07787 557557 for an informal chat. Our website www.bransonautomotive.co.uk.

CATHERTON

COMMON UPDATE

It seems like autumn might finally have arrived. Temperatures still seem unseasonably warm but the leaves have started to change colour and fall and lots of mushrooms are popping up at last. The dry weather we had been experiencing through August and September seemed to hold them back but they are now making up for it. I see Parasols and shaggy ink caps everywhere but the Common is rich in less common fungi.

With the change of season our work programme has changed too and the volunteers have once more begun cutting and pulling young birch trees to stop them overrunning large parts of the common. A regular job which was probably less necessary when cows, horses and donkeys roamed the common and were very keen on browsing any leaves they could reach, often preferring leaves to grass.

We have been lucky this year to be approached by Butterfly Conservation who would like

to help us carry out additional work as part of a large project they are funding across the Midlands to help threatened butterfly species. The butterfly they are most keen to help at Catherton Common is the Small Pearl-Bordered Fritillary, very rare in this part of the country. They have agreed to fund work at locations across the common from Crumpsbrook to Cramer Gutter to improve the flight lines and feeding and breeding areas. The caterpillar feeds on Marsh Violet which grows in wet flushes bogs and bell pits. We have already identified several areas where the violets are still in reasonable numbers and will be clearing gorse, birch and bramble to open these habitats and keep them wet. We will also fell areas of taller birch to make sure these areas are well connected for the butterflies.

Clive Dean

SWT Reserves Officer South

FAR FOREST ROYAL BRITISH LEGION

The Legion is facing a period of greater demand for their essential welfare assistance. Poppy Appeal Organiser, Jim

Woods, said "We have been able to get a wide range of Poppy Appeal merchandise and look forward to the valuable support of the public in our centenary year."

The branch has supplied Poppy Boxes to local schools; members will also be manning stands at the Strensham Services on the M5. Branch Chairman, Martyn Carter, said: "The Poppy Appeal is an important source of the funding the Legion needs to help serving and former members of the Armed Forces, and their families.

Subject to any changes to current Government restrictions the Branch is working with the Reverend Sallie Butcher to arrange for the Annual Remembrance Parade and Service to take place in Rock on Sunday 14th November. The Parade will form up in the Car Park of the Rock Cross Inn at 10.15am before marching to St Peters and St Pauls Church in Rock for the Service of Remembrance.

Nigel Caldicott

Are you buying your first home, moving home or looking to remortgage?

- I personally manage the entire process ensuring you get the perfect mortgage
- I compare, advise and arrange mortgages from the entire market
- I liaise with lenders, solicitors and estate agents to ensure a smooth process
 - **100% free** - I never charge a fee for my mortgage services
 - Access to highly competitive **life insurance** policies
- I am also a qualified **Will Writer** so contact me to have your Will written

Call me now to find out what you can borrow and your next steps

YOUR HOME MAY BE REPOSSESSED IF YOU DO NOT KEEP UP REPAYMENTS ON YOUR MORTGAGE



I'm Stephanie

**01299
549 820**

More Clarion Smalls

GUTTER CLEANING SERVICE

No ladders or scaffolding needed.
Can reach any awkward place.

All residential and commercial

Competitive rates

Call Ian on 07870384096

PAUL LYNCH PLASTERING SERVICES

Recently relocated. Offering all aspects of plastering including making and repairing mouldings, cornices, etc. Fully insured, references available.

07890 049 592

or

01299 272931

HIS & HERS

Dog Grooming Parlour

All breeds and
Cross breeds professionally
Trimmed and Groomed



J. A. Guest

Tel: 07790 796 027

**Washing Machine
Repairs and Sales**

JULIAN BREAKWELL

Telephone 07791 633 746

**Repairs to all makes, including
Bosch, Hoover, Zanussi and
Hotpoint**

**NO CALL OUT CHARGE
FIXED LABOUR COST**

Ever After

- Breakfast club
- After school club
- Holiday club
- "Forest schools" outings
- 15hrs education funding
- 24U funding
- Age ranges: 3 months to 11 years



Day Nursery
Cleobury Mortimer

Please contact us on 01299 272 777
Or Call in to see us anytime.

Friendly, Caring Environment for the Community

Hi everyone, don't forget that we are still collecting soft toys and teddies to be sent to the less fortunate.

So drop them off in Market Hall please.

Many thanks for your help.

Collections4charities.com 07976307889

Piano tutor
Francis Engleheart

School-aged or adult students, beginner or advanced. Based in Kinlet, but I can come to you. Some day and after-school spaces available.

07710 288526 • fengleheart@hotmail.com

S. L. CARTER

**PROFESSIONAL PAINTER AND
DECORATOR**

**PLASTERING, TILING, COVING AND
GLAZING**

CLEOBURY MORTIMER

TEL: 01299 272868

MOBILE: 07815 483 029

Sad news. The World Gravy Wrestling Championships have been called off due to 'elf and safety and insurance issues. Given the emergence of a variety of allergies and lifestyle choices which might affect potential contestants, I would have thought that coming up with a gravy recipe acceptable to all would have been a nightmare...

A photographer, famous for getting informal shots of film stars and other well known individuals, was asked how he managed it. He replied that he used one of two tactics. The first was to ask the subject to pretend they were a small child again, in which case they would mess around and he could get the shot he wanted. The other was to tell them the walrus joke. When asked how that went he quoted it: 'What is the similarity between a walrus and Tupperware? - they both like a tight seal'. When they laughed, he got his shot.

Further to my piece on religion last month, an investigation into child abuse by the Catholic Church in France has concluded that up to 300,000 children were abused by around 3,000 priests over an 80 year period. Sadly, similar abuse (albeit on a smaller scale) also occurred within the Church of England with the activities of the Bishop of Gloucester, Peter Ball, and others being the subject of a cover up for decades before he was finally convicted in 2015. The even more worrying aspect of this case was the fact that the cover up went right to the top of the C of E hierarchy so no point in taking the 'Holier than Thou' approach to the Catholic cousins.

More problems for C of E with a decision in the Leicester diocese to reduce the number of parishes from 234 to 20–25 huge groups called minster communities. This would result in the disappearance of at least 1 in 5 local vicars and creating what could involve some kind of contact centre for enquiries (and we all know what a shambles most contact centres are...). An alternative proposal

to cut diocese administration costs by 10% was defeated. This appears to ignore the results of the recent 'renewal and reform' projects which cost some £248 million between 2017 and 2020 and failed to increase church attendance. Such an approach is likely to destroy a system that has survived and served many generations for over 1000 years. Better to look at the blossoming bureaucracy and waste within the system before destroying it.

I see that the Duke and Duchess of Sussex are getting involved with an 'ethical' investment company (if such a thing exists). Does this mean that if the Duchess becomes an 'ethics' girl that she would have to wear white stilettos and dance round her handbag? I think we should be told...

Are there problems with our postal system? I have recently sent two small packages to friends and relatives and neither have arrived despite them being properly packed and addressed with the senders details on the reverse. Fortunately they didn't contain anything worth more than a few pounds, so not worth nicking, but it is still annoying as the contents will be difficult to replace. I have the posting certificate for one of them and, on enquiring at the Post Office, was told that I will have to go on

line and complete a 'not received' report which will be followed up. I'll let you know how it goes.

Bad news for the Welsh cheese company Blaenafon Cheddar. For the past 15 years, they have buried their cheeses down a shaft of the Big Pit coal mine as part of the maturing process. Now the National Museum of Wales which manages the Big Pit plans to discontinue the arrangement due to (unspecified) 'elf and safety' concerns. As a result, the cheeses will be aged in tunnels underneath a local hotel which were used by the Chartists in 1868. However, Blaenafon Cheddar will still be allowed to use images of

NEWSPAPER DELIVERIES



Monday- Saturday

Covers Cleobury Mortimer and Clee Hill

Contact Laura Callwood on 07495 708404

or lauracallwood@outlook.com

WILMAS CLEANING & IRONING SERVICES

Experienced cleaner, very trustworthy and reliable. If you would like your ironing done you can drop to my house. I am available weekdays, and weekend's times/days flexible. References are available upon request.



Please contact me for further details on

07891416477
01299 272 941



Number Nineteen

No.19 Denture Repairs

Dental Laboratory

SPEEDY, QUALITY DENTURE REPAIRS

Cracked/broken dentures repaired the same day.

A 1 HOUR service is available for when time is of the essence, just call to make an appointment .

19 Lower Street, Cleobury Mortimer, DY14 8AL

Email: nevilleweaver@googlemail.com

Phone: 07973856733

All work undertaken by a GDC registered technician

A.B. Plastering
Plus Traditional Lime Plastering

Adrian Booton
PLASTERER

4 Severne Green, Bayton
Nr Kidderminster, DY14 9LL

Tel: 01299 832 838
Mobile: 07974 582 524



TOTAL PROPERTY MAINTENANCE

Fireplaces built for multi-fuel burning stoves,
Plastering, Building & General Maintenance

Rob Taylor

Mobile: 07944 074540

Landline: 01299 832734

Email: rptbuilding@hotmail.co.uk

E.PURSLOW & SON LTD

Stone, Gravel, Cement Supplies

Approved Coal Merchant

Calor Gas Stockists

Tarmacadam Specialists

Car Parks and Driveways

Constructed.

TEL: 01299 270314

David Ward
firewood



Do you need a dependable consistent quality supply of seasoned or kiln dried hardwood and softwood firewood?

Cut and split to suit and delivered in breathable 1.2-cubic metre bags, so no need to restack.

Small delivery vehicle, fitted with crane, can deliver to most locations and situations.

CALL DAVID TO DISCUSS YOUR REQUIREMENTS:

Mobile: 07866 441154

Alan Smith Aerials

Digital TV Installations.

Freeview aerials fitted and distributed around the house.

Freesat box, dish, and cable supplied and fitted. One off payment, **No contract or subscription required.**

Extra points, Repairs, New fits, Set ups, Multi room.

All work is carried out by a *Local*, fully qualified and insured installer.

01299 270007 or 07970 675728

A. Farr Painting & Decorating

Give your home a beautiful new look....

Contact:
andyfarr12345@gmail.com 07815 855340

Cuitar Lessons

With an experienced local tutor
Teaching for 26 years privately and in schools
Exams available. DBS certificate
All ages, styles and abilities welcome
Contact Mark for more information @
MARK.CHECKLEY@sky.com
01746 718636 - 07708 386433



**DO YOU SUFFER WITH SWELLING OR TIRED ACHY LEGS?
DO YOU HAVE SWELLING OR OEDEMA IN OTHER PARTS OF YOUR BODY?**

A build up of fluid or oedema can be such a problem & may deteriorate if you ignore it.
There are many causes for oedema and many ways that it can be improved with the appropriate care and treatment.



Medical Lymphatic Drainage Treatment-MLD



Mary provides Comprehensive Assessment and a variety of specialist therapies.

Ring for an informal discussion or to book at appointment on 07725598715
Or email lymphtherapy@icloud.com

Mary also provides Bowen Therapy a remedial & holistic therapy for all sorts of joint & health problems.

LymphTherapy

Provides a solution to help you manage swelling and oedema



Therapist: Mary Warrillow, RN, BSc (Hons), QN, Bowen Therapist
Mary is a Registered Nurse and Clinical Nurse Specialist in Lymphoedema & Lipedema.
BSc (Hons), QN, Bowen Therapist

TRACEY'S KREATIONS

28 High Street, Cleobury Mortimer

FRESH FRUIT AND VEGETABLES DAILY

FREE RANGE EGGS AND LOCAL PRODUCE

FREE DELIVERY

Fruit and Veg Boxes Delivered Daily to Your Door

www.traceyskreations.co.uk

INSTAGRAM FACEBOOK

Telephone: 01299 270943 / 07376 282444

Email: traceyskreation@gmail.com

Birthday Cards - Anniversary Cards

Special Occasion Cards

Ice Cream - Confectionery - Sweet Hampers

Helium Balloons - Toys

FREE DELIVERY

Tele:- 01299-272757 *Hands on Printing* **Email:-** clickclick2@hotmail.co.uk
Mobile 07708 587787

All digital media printed to 6"x4" 5"x7" 8x6" 10"x8"
CANVAS WRAPS FROM 12"x16" - 30"x 20"
ENLARGEMENTS FROM 12X10" TO 24X36"
 FROM PHOTO'S, DIGITAL MEDIA & 35mm SLIDES

PASSPORT PHOTO'S ONLY £4-00
WHILE YOU WAIT

MOST VIDEO FORMATS TRANSFERRED TO D.V.D.
 USB or SD cards

INCLUDING VHS - VHSC - SONY 8 - DIGITAL 8 - Hi8 - MINI DV & BETAMAX
 REEL TO REEL & CASSETTE
AUDIO TAPES & OLD LPs TO CD

PHOTO & VIDEO FILES TRANSFERRED FROM MOBILES TO DVD ETC.

STANDARD 8 - SUPER 8 FILMS TRANSFERRED TO D.V.D.
 USB or SD cards
DAMAGED PHOTOGRAPHS RESTORED ETC.

BIRTHDAY AND CELEBRATION BANNERS

Look Who's 50 Today!

VINYL BANNERS - BUSINESS CARDS - SHORT RUN FLYERS - INVITATIONS - ORDERS OF SERVICE

B-W OR COLOUR PHOTOCOPIES
SELECTION OF PHOTO FRAMES

Traditional Studio Portraits and Pet Photo's

Video Filming Service

43, High St.
 Cleobury Mortimer.
 DY14 8DQ

 **LACON CHILDE SCHOOL** 
 the future begins here
 Headteacher: Darren Reynolds

1735



Lacon Childe School, Love Lane, Cleobury Mortimer, DY14 8PE Tel. 01299 270312 email - admin@lacon-childe.org.uk


LUDLOW SALVAGE
 ~ Est 2017 ~
 Reclaimed Building Materials
 - and Architectural Antiques

Station yard, Station road,
 Woofferton, Ludlow SY8 4AW

T 07805 312168
@ ludlowsalvage@gmail.com
f /ludlowsalvage
📷 /ludlowsalvage

WWW.LUDLOWSALVAGE.CO.UK

BoomeranG
 of Cleobury Mortimer
 private hire travel

- Friendly, reliable service
- Local & long distances
- Fully council licensed (up to 12 passengers)
- Airport transfers
- Courier service
- All occasions catered for

Tel: 01299 271257, Mob: 07411 142755, Email: stuart.boomerang@yahoo.co.uk

ST JOHN'S CHURCH DODDINGTON

As mentioned last month, work in the churchyard has started to make the path accessible for all. The architect found that a minor adjustment to the route is necessary (it won't affect any graves). We have put the work on hold until that is sorted. Apologies for any inconvenience and we will get started again as soon as possible. Access to some areas continues to be restricted but services will continue (as advertised on the Benefice page). And we continue to work on improving and repairing the church, including better access and facilities inside. We have several grants in place but we need more funds to get started – if you would like to help us you can donate in church (using our contactless point is easy!), contact us, or make a donation via our homepage: www.achurchnearyou.com/church/10505/ Email: stjohnsdoddington@gmail.com Follow us on FB: @StJohnsDodddington
Celia Gibb 01584 318036

THE STROKE SUPPORT GROUP

The Group is back meeting regularly, on the fourth Tuesday of each month. Our next session is on Tuesday November 23rd at 2.00 pm at the Community Hub. We are being joined by the Carers Group and we may organise some activities together in the coming months – a

Christmas Lunch is definitely one on the cards. Anybody affected by stroke, directly or as a carer is welcome to join us – please call Katja (on Tuesdays and Thursdays) at the Medical Centre on 270209.

Graham Simpson

CLEOBURY W.I.

Members and visitors were excited to welcome a best selling author to our October meeting; Gillian McAllister has written six novels all of which have featured on the Sunday Times best seller list. We were so interested in the story of her route to published status which was not an easy or speedy one and also included lengthy spells of ill health. Gillian answered the many questions put and kindly signed copies of her books which are highly recommended.

This year we are fundraising for the Royal British Legion with two Winter Warmer lunches and their members recently joined us on a lovely, sunny day for an outing to the National Memorial Arboretum. Mark Baldwin will be telling us about the women agents of the SOE in the Second World War on Tuesday November 9th at 7.30pm in the Market Hall.

Judy Sant

LACON CHILDE BAG TO SCHOOL

This drive to collect good quality second hand clothing for all ages will be based at the Teme Leisure Centre in

Love Lane before 9.00am on Friday the 26th this month. As well as clothing, they welcome soft toys, household linen, curtains, towels and household bedding.

Just bag it and drop it off at the Centre, where you'll find members of the Parent Teacher Association who can help you.

WELCOME, VICTORIA



This is Victoria Holland, newly appointed manager at the Severn Hospice shop on High Street. She has a background in retailing, and looked very happy as she looked around her new work place and met the crew of volunteers who made her very welcome. As one of the staff said: "Wasn't she lovely? A pleasure to work for."

She takes on a successful shop with a great reputation in the community. We wish her every success as she leads our Severn Hospice shop out of the pandemic and on to more success.

Cleobury Mortimer Golf Club

At Cleobury Mortimer Golf Club we believe that a really enjoyable golf day takes more than just a great golf course. We make sure that your whole experience, from the friendly welcome in the golf shop to your drinks and meal in our relaxed clubhouse, is all part of a day you'll remember.



Everyone Welcome

Membership available.

Just some of the many benefits of joining Cleobury Mortimer Golf Club

- Access to full length 27- hole golf course
- Opportunity to achieve and maintain a handicap
- Family, Friendly Environment
- Playing opportunities at all times of the week
- A range of competitive opportunities
- Open dawn to dusk 363 days a year.

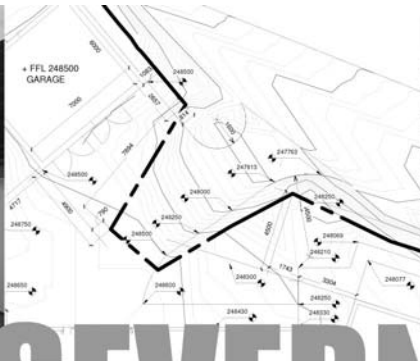
We look forward to meeting you at Shropshire's friendliest golf club.



01299 271 112 (ext 1)

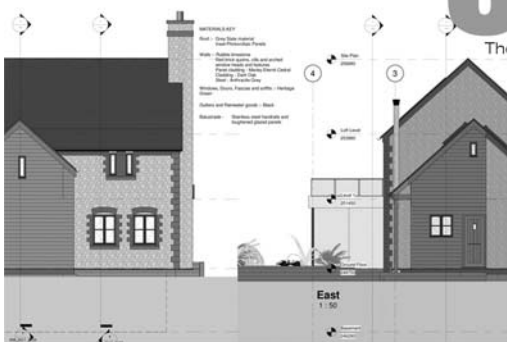
pro@cleoburygolfclub.com

www.cleoburygolfclub.com

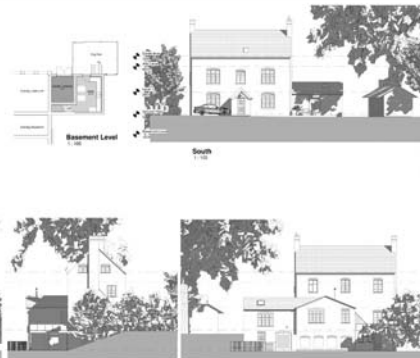
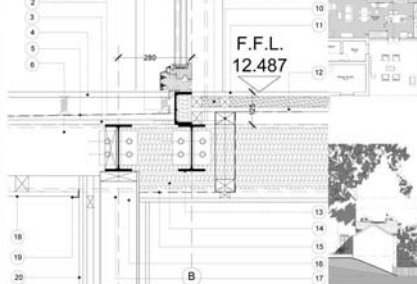


SEVERN

architects



The Guard House, Cleobury Mortimer, DY14 9BD



We are a friendly Shropshire based architectural practice with plenty of experience in all kinds of residential projects large and small. Using the latest 3D software package and technology we can turn your virtual dream home into a reality.

Contact us now on 07825 759484 or email julie@severnarchitects.co.uk for your consultation

Our Architectural Design Services include

- Design & Feasibility Studies
- General project Advice
- 3D Modelling
- 2D CAD Drawing
- Planning Advice and Submissions
- Building Regulation Applications
- Tender & Construction Drawings
- Contract & Project Management

RIBA 

Chartered Practice

KIDDERMINSTER

SELF STORAGE AND REMOVALS



STORAGE

Free insurance . Flexible Terms
Fixed Price Guarantee . No hidden costs

REMOVALS

Professional Removal Service
Est. over 25 years

PACKAGING MATERIALS

Boxes, Bubblewrap, Tape Etc. for sale
Free local deliveries on orders over £20

01562 744088

www.kidderminsterselfstorage.co.uk

Unit 11 Finepoint Way, Stourport Road, Kidderminster DY11 7FB
info@kidderminsterselfstorage.co.uk

ONE STOP ROOFING

The Flat Roof Specialists



- Rubber, Fibreglass & Felt
- Re-pointing & Chimney Repairs
- Fascias & Guttering



Take advantage of our offer: Replace your flat roof Making EPDM (rubber) your choice for a long lasting, weatherproof & high slip resistant membrane, with a lifespan of 50 years, **get it for the same price as felt**, which only carries a 10 year guarantee!

Replace your flat roof with EPDM (rubber) & add a skylight or lantern, giving extra light to your room starting **from as little as £400!!**

Freephone 0800 0855277 * 07538 471274

www.onestop-roofing.co.uk

onestoproofinguk@gmail.com

Family business est. 35 years.
All repair work undertaken

Proud members of
Checkatrade.com
Where reputation matters

CLEOBURY SEAFOOD & FREEZER CENTRE

6 Newhouse Farm - Tenbury Road - Cleobury Mortimer

01299 271345

Ready Meals

*We stock a wide range of ready meals, from the ordinary to the extra ordinary !
Plus a range of Vegetarian, Gluten Free and Vegan meals.*

Mr Dave's

*Meat, Chicken, Prawn and Vegetarian Balti, Madras Curry
Mr Dave's extra large naan, plain and garlic & coriander.*

Fish

*Cod, Haddock, Plaice fillets, Sea bass, Lemon sole, Cod Loins, Smoked Haddock.
Battered & breaded fish fillets. Young's Jumbo Cod Fish Fingers.(Very Popular)*

Seafood

*Raw king Prawns, Squid, , whitebait, cooked tiger prawns, scallops, seafood cocktail.
Hot & Spicy Prawns, Breaded Cod & Plaice Goujons*

*New Fish Cakes Thai Style Cod & Prawn, Smoked Haddock, Mozzarella & Spring Onion,
Sea Bass, Cod, Lime & Ginger.*

Fruit and Vegetables

Potato Products

Bannister Jacket Potatoes, Oven chips, Sweet Potato Fries Twister Fries, Hash Browns, Spicy Wedges

Chicken Products

Southern Fried Breaded Chicken Steaks, Breaded Chicken Goujons, Chicken Nuggets, Chicken Bites.

Gateaux for all occasions

BENNETTS ICE CREAM

Opening Times 9am to 4.30pm Mon to Friday. Saturday 9am to 12

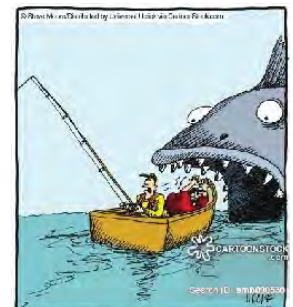
Visit our web site www.cleoburyfreezercentre.co.uk

Cleobury Clarion November 21

Page 50



"We tried artificial files. We tried lures. We tried live bait. Nothing works ... it's like they're psychic!"



"Blood-curdling screams. Hayes, will do nothing to help us catch a fish."

CURLEWS ON CLEE HILL

Community Wildlife Group members located about eight breeding pairs of Curlews in the area in April, similar to the last couple of years, but a lot less than the 13 pairs when we started in 2012. The Shropshire Ornithological Society (SOS) *Save our Curlews* nest finding and protection project continued work the started here in 2018, and exceeded expectations by finding six nests (one just to the north of our area). Three had an electric fence put round them. The fences worked very well (none of the nests were predated), but the eggs in one nest didn't hatch and another clutch was abandoned. Four chicks in one brood hatched, and they were radio-tagged, so they could be tracked to find out how they use the landscape, and what happens to them. Chicks usually leave the nest within a couple of days of hatching, and are on the ground for 5-6 weeks before they can fly. They are vulnerable for the whole of this period. Failure of chicks to survive and fledge is a major cause of the Curlew population decline, locally and nationally, and we need a better understanding of the reasons so we can develop effective conservation measures. None of these chicks fledged, they were all predated within a few days of hatching. Three other pairs also had chicks, but they were only located after the eggs hatched. They were all predated too.

We also surveyed an area of four squares (including Hopton Cangeford and Hayton's Bent) to the north-west of our original area, and found four more pairs, compared with six in previous years. Again, there was no evidence that any young fledged.

The SOS project worked in two other Community Wildlife Group areas as well. Altogether (including Clee Hill), 24-25 breeding pairs of Curlew were found, 16 nests, of which 12 were fenced, 8 produced chicks, and 21 were radio-tagged, but only one fledged. The average lifespan of the 20 chicks that didn't survive was only 5.5 days. They were all predated. Only one brood of three, in the Upper Clun, fledged.

Altogether, there are 10 Community Wildlife Groups monitoring about 100 pairs across Shropshire, but we found no evidence that all young fledged, apart from the three in Upper Clun.

You can read more about what has been done on the SOS website www.shropshirebirds.com/save-our-curlews/. This describes the results in detail, our future plans, and the overwhelming evidence that predation by foxes and other predators is the main cause of Curlew's continuing decline. It is clear that the annual release of millions of pheasants for shooting, only a third of which are actually shot, results in an over-abundant food supply which maintains the numbers of the Curlew's main predators well above naturally sustainable levels.

Almost all the landowners we approached were pleased to have Curlews on their land, supported our efforts to protect them, and gave permission for us to look for, and fence, the nests. We are grateful for their support. The project is expensive, and has been funded by Shropshire Ornithological Society (SOS), an appeal, and several grants.

The Community Wildlife Group and SOS will repeat the project in the area again in 2022 to see if this year's results are typical or unusual, so we can draw firm conclusions. Clarion readers are invited to donate to the appeal, please. We hope to have a public meeting to discuss these results, and plan the 2022 survey next March.

You can find more information about local Curlews, including how to help monitor the whole local population in 2022, arrangements for the public meeting in March, and how to make donations to the Appeal and where to send them, on our website

www.shropscwgs.org.uk/



LUDLOW FIREWOOD

~ Est 2019 ~

Suppliers of Premium Grade Ready to Burn Firewood, Beautifully Crated and Delivered to Your Door



T 07949 318014

@ ludlowfirewood@gmail.com

Instagram /ludlowfirewood

Facebook /ludlowfirewood

Station yard, Station road, Woofferton, Ludlow SY8 4AW

WWW.LUDLOWFIREWOOD.COM

Available in Barrow bags and nets for all your access requirements.



R. Weavers Services

Stove Installations, Service and Repair

- All solid fuel wood burners and boilers supplied and installed
- Chimneys relined and twin wall systems built
- Chimney Pots, Cowls, Carbon Monoxide alarms and Air Bricks fitted
- All Stoves and Fires serviced including chimney sweep
- Hetas Landlord Safety Certificates

Tel: 01299 272712 Mbl: 07807 343006
email: info@rweaversservices.co.uk



Lower St Garage

7 Lower St, Cleobury Mortimer. DY14 8AA



- M.O.Ts on cars, motor bikes & small commercial vehicles
- Tyres, Tyre fitting,
- Puncture repair and Tracking.
- Diagnostics, Air conditioning
- Welding.
- Service and Repairs to most vehicles.
- Delivery and Collection Service Available

Contact The Team at Lower St Garage on: 01299 270208



CLEOBURY COMMUNITY HUB

Coffee Shop, Climb61, Youth Events

Mondays - 9:30am-12:45pm, 2:30pm-9pm
Tuesdays - 9:30am-12:45pm, 2:30pm-9pm
Fridays - 9:30am-12:45pm, 2:30pm-5:30pm

October has been a month of growing our activities and reaching out to more ages than ever before. We have now run three 'Hub Youth' events led by our new Youth Worker, Naomi. We have enjoyed Bouldering, Team games, Taskmaster and Tie Dying. We look forward to different activities each week with the main focus on providing a fun, safe space for young people to enjoy. Please check out our "socials" for up to date information on future activities.

Please follow our social media channels or pop into the CCH for more information on regular and ad hoc activities.

We host a number of community groups including the Good Grief Café, the Stroke Support group and the new meeting place for a coffee and chat group for parents/carers of children (any age) with autism. Please get in touch for specific dates and times. Thank you for supporting this community facility and thank you to our incredible team of growing volunteers. We are so grateful to be part of this community.

FOCUS ON - Friday 5th November 5pm-8pm

Young People, Toddlers, Adults, Families, Fire Pits, Hot Chocolate and Sparklers

We would like to invite everyone that uses the Cleobury Community Hub to come and enjoy some time together in a slightly different format. Whether it's Rock Tots, Hub Youth or you just pop in for coffee, you're most welcome to join us! We will have some fire pits outside with sparklers for you to enjoy. A relaxed evening where you can pop in for 3 minutes or 3 hours!

Climb61 Session Times - To book: www.smypp.org.uk

Tuesdays - 9:30am-11am, 11:15am-12:45pm, 2:15pm-3:45pm, 4pm-5:30pm, 5:45pm-7:15pm, **(Mondays too)** 7:30pm-9pm

Fridays - 9:30am-11am, 11:15am-12:45pm, 2:15pm-3:45pm, 4pm-5:30pm

LADIES NIGHT - Thursday 28th October



@cleoburycommunityhub

@saintmarysyoungproject @cleoburycommunityhub



EVERYTHING INTERIOR UPHOLSTERY

REUPHOLSTERY SERVICES:

- AUTOMOTIVE
- CARAVANS
- CAMPER VANS
- TRADITIONAL & MODERN
- COMMERCIAL & BESPOKE
- DOMESTIC
- CARPET & UPHOLSTERY CLEANING
(in partnership with WE GLEAM)

OVER 30 YEARS EXPERIENCE



CONTACT US TODAY

Unit 19 Old Station Business Park, Cleobury Mortimer, DY14 8SY
07961 712683 / 07961 792103
www.everythinginterior.co.uk
email: everythinginterior@outlook.com

What is Hacking and do we care about it?

Hacking refers to activities that seek to compromise digital devices, such as computers, smartphones, tablets, and even entire networks. Hacking is the Information Technology equivalent of burglary. This takes the form of information being compromised rather than physical goods such as you would have in your home being stolen. I am writing this article to bring the often unreported activity of hacking to the reader's attention. This is because hacking is often closely related to the theft of personal data from major organisations which can result in the building of a false 'or cloned' identity with consequential loss of money from bank accounts or credit cards. This resulting loss from identity theft and other forms of Scam has amounted to £2.3 billion in the year from April 2020 to March 2021 every year from over 431,000 reports to Fraud agencies. This equates to an average of over £5000 for every reported case in the UK. There are various definitions of hacker and some will say there are 6 types, but for simplicity I will define the three most important types. There is at one end of the scale the 'Ethical' hacker who exploits security breaches in computer systems for the benefit of the owner of that system. At the other end of the scale is the 'criminal' hacker whose activities aim to disrupt at the minimum or destroy at the maximum. The 'Ethical' hacker is generally employed by major computer or software companies and invited to identify weakness in the applications used by the companies, large or small. The process involved requires that the ethical hacker knows nothing about the company or its systems and starts from the ground up to try to break into the computers. The CEO or Head of IT in a company is usually the only person who knows that an Ethical Hacker has been instructed. This is to ensure that employees don't suddenly change the way they work and are completely unaware that someone is trying to break in to their computer. Breaking in is usually achieved by gaining access to the highest administrator level of the computer programs, where the control of the software and more importantly the company data including customer data is held. In the early days of what was known as the Dot Com era, this was frighteningly easy given that administrators did not use complex names or passwords and guessing the password was fairly easy. In today's environment, the need for a secure name and password is stressed for everyone right from the big computer users to the individuals such as ourselves with our smart phones, tablets and desktop computers. Ethical Hackers will eventually find the door into your system, sometimes it just takes a little longer. While the Ethical Hackers are working with the consent of the owner of the business, the criminal hacker (sometimes known as the Black Hat hacker) is working completely alone and with no authority from the owner of the computer system. It is fair to point out at this stage that there is no difference between the owner of a large multinational business with large computer systems and yourself the reader with a Tablet, Smart Phone or Desktop computer. Both should be protected with appropriate software and hard to break passwords, but of course the financial gain from breaking into a Multinational is much greater than the person in the street. As stated, criminal hackers break into systems, steal customer data and sell it on to other criminals who specialise in cloning identities. They also can create a scenario where computer software goes into a loop and uses up so much computing power that the whole system is rendered inoperative and customers of that company are unable to make transactions. This is called a Distributed Denial of Service (DDoS) which can have significant consequences for the company, not least of all loss of customer confidence and sales. At the beginning of this article I mentioned that many cases go unreported and the reason for this is quite simple. If a major Bank is hit by a hacker and their online systems are rendered inoperative for a period, customers cannot withdraw cash from ATM's to pay for goods or make online transactions. This can actually have a widespread impact across the economy. The longer that service is unavailable, the bigger the impact. Typically Banks due to the nature of their business will not admit that their systems have been hacked, but publicly state that a software 'glitch' or some other technical issue has happened. The public at large are not likely to lose confidence in that institution. But you can be assured that there will be frenzied activity behind closed doors to restore the systems. Occasionally a major organisation will admit publicly it has been breached and this is more to reassure customers that they have control over the situation. Finally the middle hacker is one who operates to demonstrate his technical expertise to his peers and does not damage computers or data systems but just develops his art to stay up with the developments of software. While still technically a criminal activity, these middle men are more likely to be quietly invited to work with large companies when their activities are uncovered. That's all this month on the subject, I hope I have demonstrated that while this big criminal activity usually targets the big companies, it can happen all the way down the chain to you, the reader. STAY ALERT – BE AWARE - STAY SAFE - PROTECT YOUR IDENTITY

Booton Brothers



Construction

Rich: 07445298747

Mike: 07853225401

bootonbrothers@outlook.com

All building work undertaken

Elite Sweeps

Professional Chimney Sweep

& HETAS Stove Installer

- ✓ Prompt, reliable & friendly service.
- ✓ Cowls and Chimney Pots fitted.
- ✓ Fully qualified and fully insured.
- ✓ Guild certificates issued after every sweep.
- ✓ HETAS Approved Installer.



Call Eddie Tel. 01299 382222 / 07895 612915

www.elitesweeps.co.uk



I.P.T. GROUND SOLUTIONS

Over 30 years experience

For all pipe installations:

- Sewage • Storm drainage
- Blockage/Repairs • Ditches
- Grass Cutting / Hedge Trimming
- Driveways • Ground clearance

For all your ground needs

Contact Ian on:

T: 07870 384 096

E: ian.ptaylor@yahoo.com

W: iptgroundsolutions.co.uk

BOOK YOUR
MOT WITH US



LEWIS MOTORS KINLET

01299 841 391



SERVICING & REPAIRS TO ALL MAKES & MODELS

- Clutches & Cambelts
- Exhausters, Batteries & Tyres
- Wheel Alignment
- Diagnostics
- Recovery
- Welding

Follow us on Facebook: [LewisMotorsKinlet](https://www.facebook.com/LewisMotorsKinlet)

A SALUTARY REMINDER



Barry Treves sent us this photo, at the Neen Savage ford on October 5th. There had been heavy rain overnight and this car was swept off the crossing. Luckily the occupants managed to escape and the car was not carried further downstream into deep water.

THE MEN'S SHED

Work on the completion of the shed progresses, with benches built from the old tabletops from the Farmers' Market. And the installation of new machinery purchased with a grant from the National Lottery courtesy of great work by both the late Keith Martin and more recently Bill Duley, means the official opening of this ambitious project draws closer. Committee chairman Pete Blackburn is too wise to quote a date with much paperwork and bureaucracy still to deal with, but the suggestion of a Christmas period celebration has not been dismissed. Watch

this space and any other that you think might be willing to spill the beans. For sure, a crew of willing volunteers is putting in the hours.



Pete Blackburn (left) Iain Smith (half hidden) and Mike Patterson cut boards to get the right size for another installation of a woodworking tool.

This will be a shed to be proud of, designed from the very start to be laid out in a workmanlike manner, with Mike Patterson's knowledge put to good use. When it does open, there will be a full list of all who have given time, money and knowledge to make it a good place to meet, work, chat and share ideas.

A colorful advertisement for the Cleobury Country Farmers Market. It features a circular logo on the left with a church and the text 'Cleobury Country Farmers Market'. The background is dark with decorative floral patterns and a rainbow-like border at the top and bottom. The text in the center reads: 'CLEOBURY COUNTRY FARMERS MARKET IN AND AROUND ST MARY'S CHURCH SATURDAY 20TH NOVEMBER 2021 FROM 9.30AM TO 12.30PM'.



Professional Family Estate Planners



- Wills or Lasting Powers of Attorney from £95
- Free Will reviews
- Probate support
- Care home fee avoidance
- Free funeral plan with every Will
- Family Protection Trusts

"A lifetime's attention to complex legal issues as a retired Detective Superintendent and now a Private Client Lawyer means **you can definitely trust Mark and his daughter Lauren to write your Will**"

T: 01299 251442

E: info@ambalegalservices.co.uk

W: ambalegalservices.co.uk



- Appointments by telephone, video link or in the comfort of your own home
- Over 45 years' experience in law
- Friendly and professional support for you and your family
- Call us up to see how we can help!



ARE YOU LOOKING FOR Independent Financial Advice?

Consequential Planning are your local independent financial advisers. We have a highly qualified team with extensive experience in all aspects of financial planning. We can offer help and advice on investments, pensions, protection and mortgages.

Telephone 01299 407128

to arrange a free financial review or visit:

www.cnsq.co.uk



GRANTS AVAILABLE TO COMMUNITY GROUPS

The Town Council has two pots of funding available to support local community groups based in Cleobury Mortimer.

1. Support for activities

We can provide some financial support to enable you to provide activities for your community group.

2. Capital Funding

We have £1,675 available for a capital project ie equipment for a community group. As the money has come from a capital receipt to the Council it can only be spent on a capital item which must have a minimum working life of five years.

For both grants you will need to explain the purpose and need of the project, how it will benefit Cleobury area residents, supply evidence of the grant expenditure and provide a report on how the money has been spent.

If you have a project or activity which would benefit from some financial support please contact our Finance Officer, Mrs Dorothy McBride on 01299 271154 or email cleobury.rfo.dorothy.mcbride@gmail.com for further information and an application form.

CLEOBURY FOOD BANK

On behalf of the Coordinator, Debbie Brown, we would like to thank everyone for their very generous donations which are very gratefully received by the Food Bank volunteers. We would like to have a few more volunteers to help manage the food donations on a rota basis.

Please contact Debbie Brown cleobury.clr.debbie.brown@gmail.com if you are interested.

REPORTING HIGHWAYS ISSUES

There have been some improvements to our roads but please continue to report any issues either directly to Shropshire Council on 0345 678 9000 or online at [Report a highways fault or concern | Shropshire Council](#) or via <https://www.fixmystreet.com/>. You can also use Fix My Street to give an accurate location of the issue from most mobile phones by downloading the app.



Burning Blocks

www.burningblocks.co.uk



A safe and easy to use alternative for logs for both wood stoves and open fires

Discount for local delivery quote: "family10" at the checkout

- Easy to light / roaring fire in under 5 mins
- Easy to stack / 10kg packs
- High heat / similar to coal on output
- Each briquette lasts over an hour
- Low moisture / 8% moisture maximum
- Store undercover

UK wide delivery available, approx. 2 days

buy online at www.burningblocks.co.uk

For more information:-

Email: burningblocks@gmail.com Website: www.burningblocks.co.uk FB: <https://www.facebook.com/burningblocksbriquettes>



Richard Haines

The Worcestershire Chimney Sweep

- ◆ Traditional & Power Sweeping Services
- ◆ Certified Chimney Sweep
- ◆ Insurance Recognised certificate issued



M: 07752 116629 T: 01584 781358 E: lostcity5@hotmail.co.uk

www.theworcestershirechimneysweep.co.uk



KINLET C OF E PRIMARY SCHOOL

Love to Learn – Learn to Love



- Outdoor play areas
- Kind – Inspire – Nurturing – Learning – Eco-friendly -Teamwork
- Small family atmosphere

www.kinlet.shropshire.sch.uk

admin@kinlet.shropshire.sch.uk

Telephone: 01299 841210

In Business - Sam, Russ and Tom's Hollywaste Holiday Lets and Burning Blocks

Having moved back to their roots in Shropshire, Sam and husband Russ along with ten year old Tom moved into their new home at Hollywaste just months ago and started a more rural way of life.

The most obvious move was converting the two-bedroom annexe to a luxury weekend or holiday let. Extended to give extra space, it's been refurbished and refurnished throughout to provide a truly luxurious place with space for six people, plus one large or two small dogs. Outside there are open decking areas and a large grassed field with goal posts, plus friendly chickens and ducks roaming free.



Living room with beautiful Shropshire countryside beyond.

The bedrooms are really well furnished, both en suite,

and downstairs the fully equipped kitchen complements the dining room and spacious living room with log burner; naturally there's a downstairs WC. and freesat and WIFI are included.



All this is backed by extra services like pamper weekends with holistic therapy and beauty treatments, shooting with transport, food, liquor cabinet and pre lit fire laid on. It's available as a wedding venue, from just the cottage to catering for the whole event, or if you fancy a Minimoon stay they can plan in a hot tub and whatever luxuries you require. Fancy stargazing? They have a clear igloo pod with furnishings and power supply.

Contact hollywasteholidaylets@gmail.com or call 07962 151322.

The other side of the business is Burning Blocks, supplying wood briquettes UK wide, but local orders get £10 off by using voucher code **family10** on checkout space. I was so impressed by these that I bought two 10kg packs, which came properly wrapped to help dry storage.

"Build three blocks up like Stonehenge, put a firelighter inside and just light it up," Sam instructed. It was that simple and those three blocks warmed my apartment from 7.00 to 11.00 o'clock bedtime.

They're clean to handle and burn down to clean ash. The heat output is very good and the whole matter of heating with wood stoves or open fires is suddenly much easier.

Contacts:

Holiday lets: <https://www.facebook.com.HollywasteHolidayCottage>

or website

<https://hollywasteholidaylets.squarespace.com>

Burning Blocks:

<https://www.facebook.com.burningblocksbriquettes>

or website:

www.burningblocks.co.uk

Hollywaste Holiday Lets

Our 2 bedroom (ensuite) cottage, sleeps up to 6 adults, situated in Hollywaste, Cleobury Mortimer. Fully equipped kitchen, open plan living room with log burner, dining area and downstairs WC. Includes Freesat and fast WiFi. There are enclosed & open decking areas outside, to take advantage of the beautiful countryside views, and a grassed area for outdoor games. Open all year round and welcomes adults, children, 1 large dog or up to 2 small dogs

Discount of 10% available for locals simply quote "keepitlocal" at the checkout

Events we can accommodate:
Staycations, Pamper weekends, Shooting weekends, Wedding venue, Minimoon stays, Stargazing weekends, Cookery weekends & events, Camping and caravan pitches are also available!
If you're interested in hiring our space or land for any event and time frame.

Tel: 07962 151322 Email: hollywasteholidaylets@gmail.com FB: <https://www.facebook.com/HollywasteHolidayCottage>
Website: <https://hollywasteholidaylets.squarespace.com> for more information



EnergyZone

Integrated Renewable Solutions

SHROPSHIRE HEAT PUMPS

EnergyZone are one of Cleobury's best kept secrets. We are one of the largest and longest established renewable engineering companies in the UK installing heat pumps since 2003. 14 in house engineers with over 130 years combined experience completing over 1000 Domestic and Commercial systems all over the UK. Based next to Hobsons Brewery in Cleobury Mortimer we are your local experts in heat pump systems.

Heat pumps are rapidly becoming the standard heating system for all new build properties, as they always have been in many parts of Europe, and the Government is offering a very generous incentive to encourage anybody with an Oil, LPG or Electric boiler to replace this with a heat pump.

Replacing your boiler with a heat pump has many advantages;

- Lower running costs for your heating - up to 50% lower
- No dependence on fuel deliveries
- Removal of current boiler under our scrappage scheme
- Up to a 10-year warranty with a 20 to 25-year life expectancy
- Government backed Renewable Heat Incentive (RHI) to help cover installation cost over 7-years (available until March 2022)

What can EnergyZone offer?

Complete design and installation of a heat pump system, including all paperwork required to enable you to claim the maximum Government incentive

Upgrade of your old radiators and hot water cylinder if required

Local support with annual servicing through our EZcare package

With the current Government incentive now is a great time to consider scrapping your old fossil fuel boiler and installing a heat pump that is not only good for the planet but also your pocket.

Call us for a free home assessment from one of our engineers.



Fully accredited installers of the brands above ensuring the correct model is selected for your home

01299 270011

www.energyzone.co.uk sales@energyzone.co.uk



Community Contacts for Clarion Readers

| | | | |
|------------------------------------|-----------------------|---------------|---|
| CEMETERY ADMINISTRATOR | Theresa Ray | 07703 965 064 | theresa.25016@hotmail.co.uk |
| CLEOBURY COUNTRY CENTRE | | 01299 272300 | In Love Lane, 9 to 5 Mon to Fri. |
| CLEOBURY DENTAL PRACTICE | | 01299 271747 | www.cleoburydental.co.uk |
| CLEOBURY CARERS | Shaz Malins | 01743 341995 | carerssupport@shropshire.gov.uk |
| CLEOBURY COMPASSIONATE COMMUNITIES | Katja Ward | 01299 270018 | 10.00 to 12.00 Weds |
| CLEOBURY MORTIMER LIBRARY | | 01299 272301 | Open 9 to 7 Mon, 9 to 5 Tues/Fri and 10 to 1 Sat. |
| LOCAL POLICE | PC Wayne Strangwood | 07773 054 587 | wayne.strangwood@westmercia.pnn.police.uk |
| CLEOBURY MORTIMER GUIDES | Fiona McCallum | 07805 737 555 | |
| CLEOBURY MORTIMER SCOUTS | Lowri Hughes | | cleoburybeavers@gmail.com |
| CRIMESTOPPERS | | 0800 555 111 | Free Police contact. Talk in confidence, to report any crime. |
| DOMESTIC VIOLENCE HELPLINE | | 0800 783 1359 | Women's Aid, 24 Hour support: |
| HOME FROM HOSPITAL | | 01584 878046 | Help over the first weeks back home from Age UK |
| MARKET HALL | Kim | | markethall@cleobury.org.uk |
| MEDICAL CENTRE | | 01299 270209 | Out of surgery hours, use the Shrop Doc Service. |
| SHROP DOC | | 111 | Service available evenings and weekends |
| THE MEN'S SHED | Pete Blackburn | 07776 243 584 | petblack@me.com |
| THE PHARMACY | | 01299 270219 | Closes for half day on Saturday. Delivers prescriptions |
| ST ELIZABETH'S CATHOLIC CHURCH | Angela Flowers | 01299 270318 | Sunday Mass at 9.00am |
| NIGHTINGALE NURSING FUND | Rosemary Abbiss | 01746 718451 | |
| TOWN COUNCIL | Clerk Matthew Sheehan | 01299 271154 | Cleobury Country Centre 9 to 2 pm, Mon to Fri. www.cleobury.org.uk . Council meets in the Centre on the first Monday of the month |
| POST OFFICE | | 01299 270211 | In the Select and Save Grocery Store, Church Street |
| SAINT MARY'S YOUTH PROJECT | Mark Greaves | 07828 116810 | mark.stmarys@live.co.uk |
| SHROPSHIRE COUNCIL | | 0345 678 9000 | |
| SOUTH SHROPSHIRE YOUTH FORUM | | 01584 874922 | |
| VOLUNTARY CAR SCHEME | | 01299 666119 | Mandy Smith |
| WASTE DISPOSAL | | 0345 678 9007 | The contractor is Veolia |
| WATER SUPPLY EMERGENCIES | Severn Trent | 0800 783 4444 | |
| NEWLIFE CHURCH | Pastor E Stirrup | 01562 630595 | Sunday services at 10.30 |

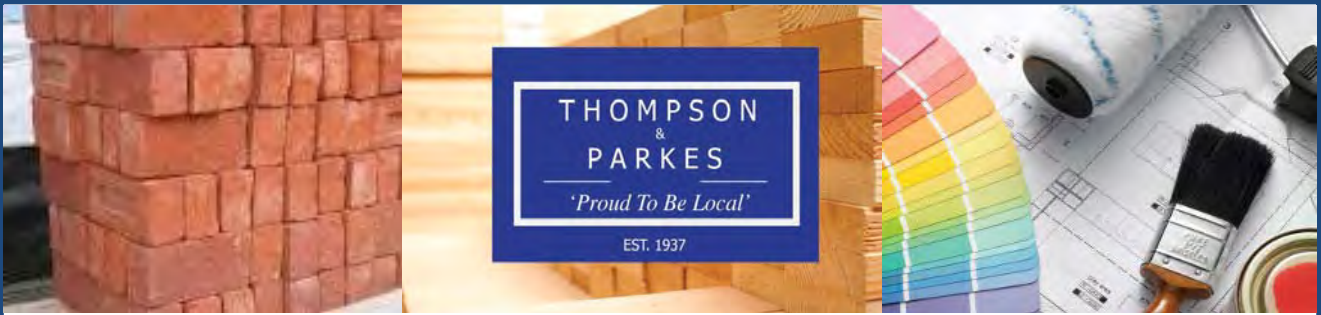
Collect the Clarion in Cleobury from: Select and Save Grocery, Londis Store, Cleobury Cafe, The Severn Hospice Shop, Mid Counties Co-op, Purslows, The Library, Swift's Bakery Tea Room and Tracey's Kreation..

Out in Cleobury Country at: Heath Farm Meats, **Bagginswood;** **Clee Hill Stores;** **Clows Top Stores;** The Sun and Slipper, **Mamble;** **Hopton Bank Service Station;** Bennetts End Inn, **Knowbury;** **Ludlow Library;** **Mahorall Cider Farm;** The Colliers Cafe & Shop, **Rock;** The Fighting Cocks, **Stottesdon;** The Duck Inn, **Chorley;** The Live and Let Live, **Neen Sollars;** The Eagle and Serpent, **Kinlet;** Parker Motors, **Ditton Priors.** **Copies are also available from the Parish Churches in:** Cleobury Mortimer, Bayton, Doddington, Hopton Wafers, Milson, Neen Savage and Neen Sollars.

Missed your Clarion? Cleobury Mortimer Library keeps the current month's copy on file and all back issues are available to read as pdfs from www.cleoburyclarion.co.uk.

DEADLINE FOR THE DECEMBER/JANUARY ISSUE: NOVEMBER 22nd. WOULD CONTRIBUTORS PLEASE NOTE THAT THIS IS LAST POSSIBLE DATE TO RECEIVE REPORTS.

Editor and Advertising Sales: Jim Reynolds, 4 Childe Road, Cleobury Mortimer, Shropshire DY14 8PA. Telephone: 01299 270642 Mobile: 07410 977 212
E-Mail: editor@cleoburyclarion.co.uk or uncle.jim@icloud.com
The Clarion On The Web: www.cleoburyclarion.co.uk



Your local specialist supplier of
Insulation, Timber, Plywood and all Building Materials

THOMPSON & PARKES

The Power to Deliver



Proud to be Local

www.thompsonandparkes.co.uk

Stocking and Delivering all Your Building and DIY Materials

Kidderminster 01562 745881
Oldington Trading Estate DY11 7QP

Oreton 01746 718414
Cleobury Mortimer DY14 0TH

Stourport 01299 534545
Minster Road DY13 8AB